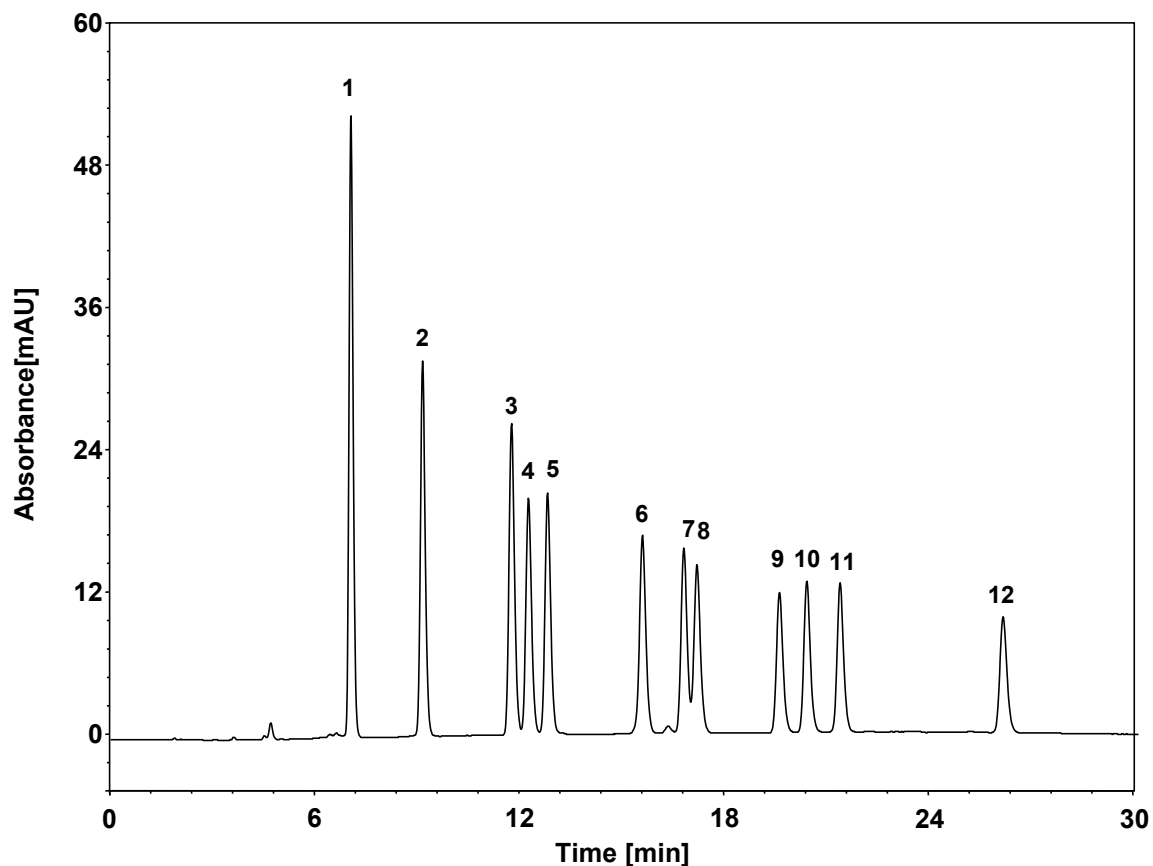


12种醛、酮类-DNPH衍生物 (国标 HJ 1153-2020)



Column: ChromCore 120 C18-T, 5 μ m

Dimension: 4.6 \times 250 mm

Mobile Phase: A) 乙腈

B) 水

C) 甲醇

Gradient:	t (min)	%A	%B	%C
	0	20	35	45
	6	0	30	70
	20	0	20	80
	30	35	20	45
	30	20	35	45

Flow Rate: 1.0 mL/min

Temperature: 35 $^{\circ}$ C

Injection: 10 μ L

Detection: UV 360 nm

Sample: 12种醛、酮类-DNPH混合物

Peaks:	1. 甲醛-DNPH	2. 乙醛-DNPH	3. 丙烯醛-DNPH
	4. 丙酮-DNPH	5. 丙醛-DNPH	6. 丁烯醛-DNPH
	7. 正丁醛-DNPH	8. 2-丙酮-DNPH	9. 苯甲醛-DNPH
	10. 异戊醛-DNPH	11. 正戊醛-DNPH	12. 正己醛-DNPH