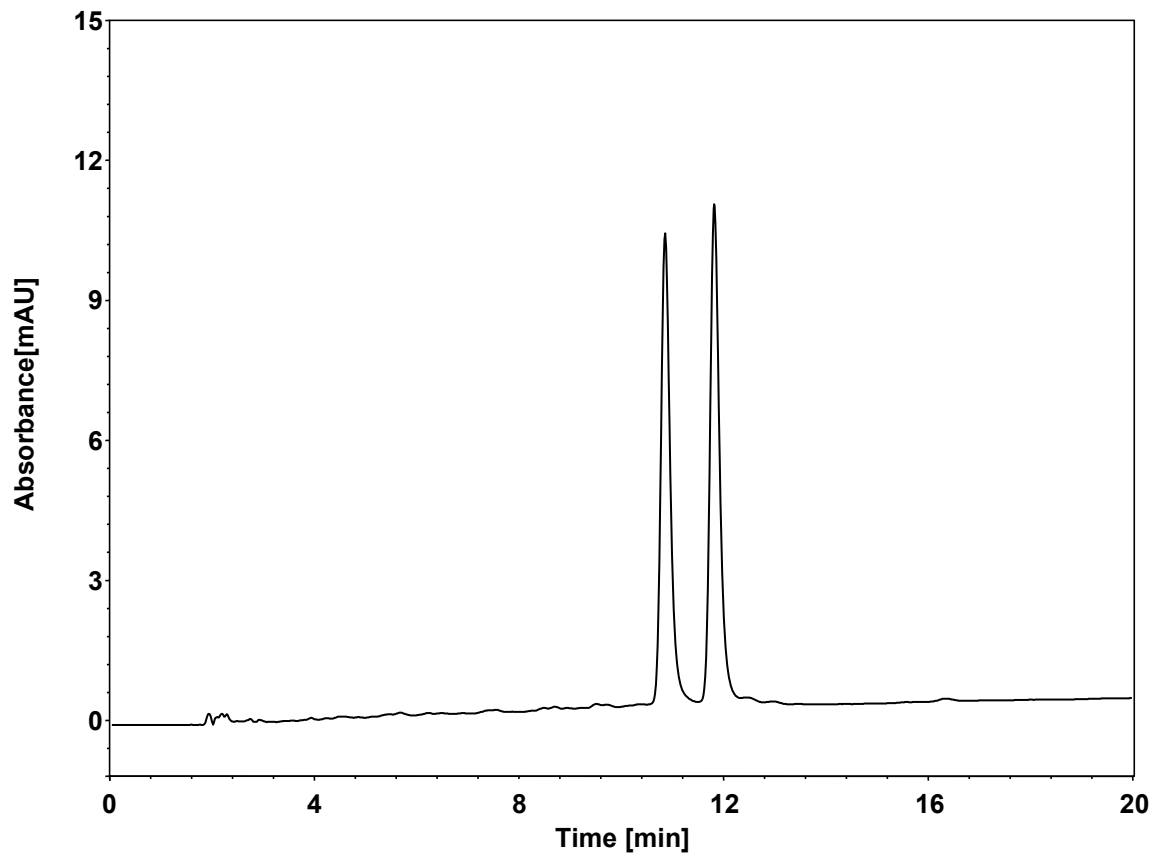


# 寡核苷酸



Column: DNACore 1000 C18, 5  $\mu$ m  
Dimension: 4.6  $\times$  150 mm  
Mobile Phase: A) 100 mM TEEA , pH7.0  
B) 25/75 v/v Acetonitrile/100 mM TEEA , pH7.0  
Gradient: t (min) %A %B  
0 60 40  
20 50 50  
20.1 60 40  
30 60 40  
Flow Rate: 1.0 mL/min  
Temperature: 30  $^{\circ}$ C  
Injection: 5  $\mu$ L  
Detection: UV 260 nm  
Instrument: Agilent Infinity II 1260  
Sample: 寡核苷酸 20 nt与21 nt

组分	保留时间 (min)	理论塔板数 (USP)	拖尾因子 (USP)	分离度 (USP)
1	10.847	18391	1.29	/
2	11.810	20845	1.29	2.99