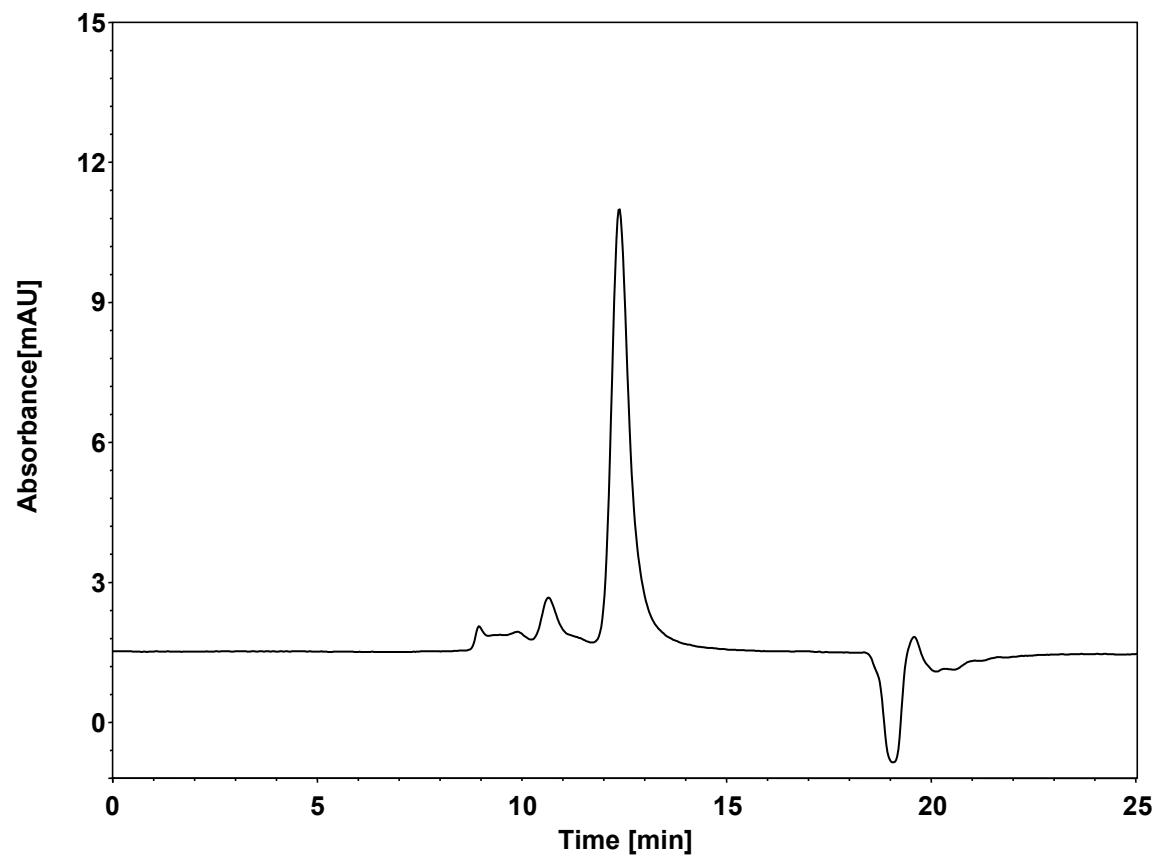


蛋白



Column: BioCore SEC-300, 5 μ m
Dimension: 7.8 \times 300 mm
Mobile Phase: 250 mM Arginine in 20 mM phosphate buffer, pH6.8
Flow Rate: 0.6 mL/min
Temperature: 30 $^{\circ}$ C
Injection: 10 μ L
Detection: UV 280 nm
Instrument: Agilent Infinity II 1290 (Bio)
Sample: 蛋白 (MW 70 kD)