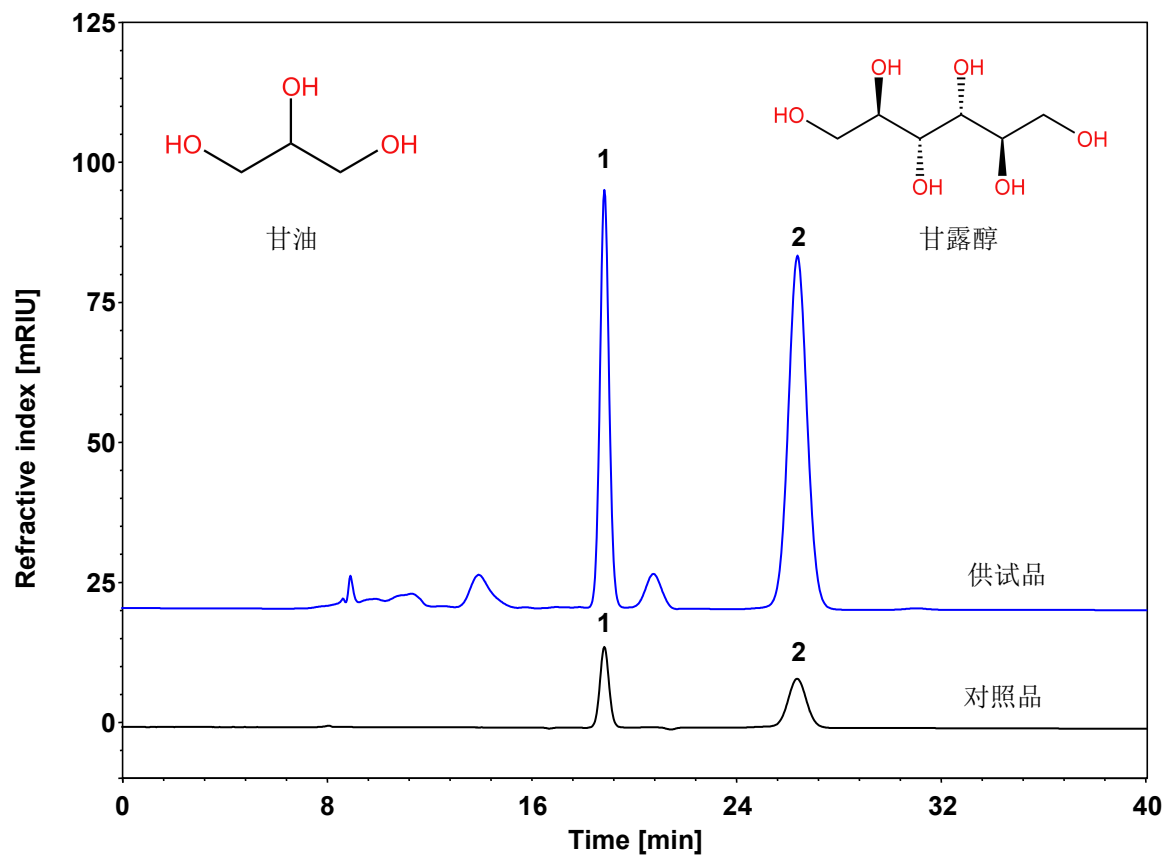


盐酸氨溴索-甘油与甘露醇



Column: ChromCore Sugar-10Ca, 8 μ m
Dimension: 7.8 \times 300 mm
Mobile Phase: 水
Flow Rate: 0.5 mL/min
Temperature: 60 $^{\circ}$ C
Injection: 10 μ L
Detection: RID 35 $^{\circ}$ C
Instrument: SHIMADZU LC-2030C
Sample: 盐酸氨溴索口服液
Peaks:
1. 甘油
2. 甘露醇

供试品	保留时间 (min)	理论塔板数 (USP)	拖尾因子 (USP)	分离度 (USP)
甘油	18.837	12955	1.047	2.066
甘露醇	26.364	6080	1.037	4.417