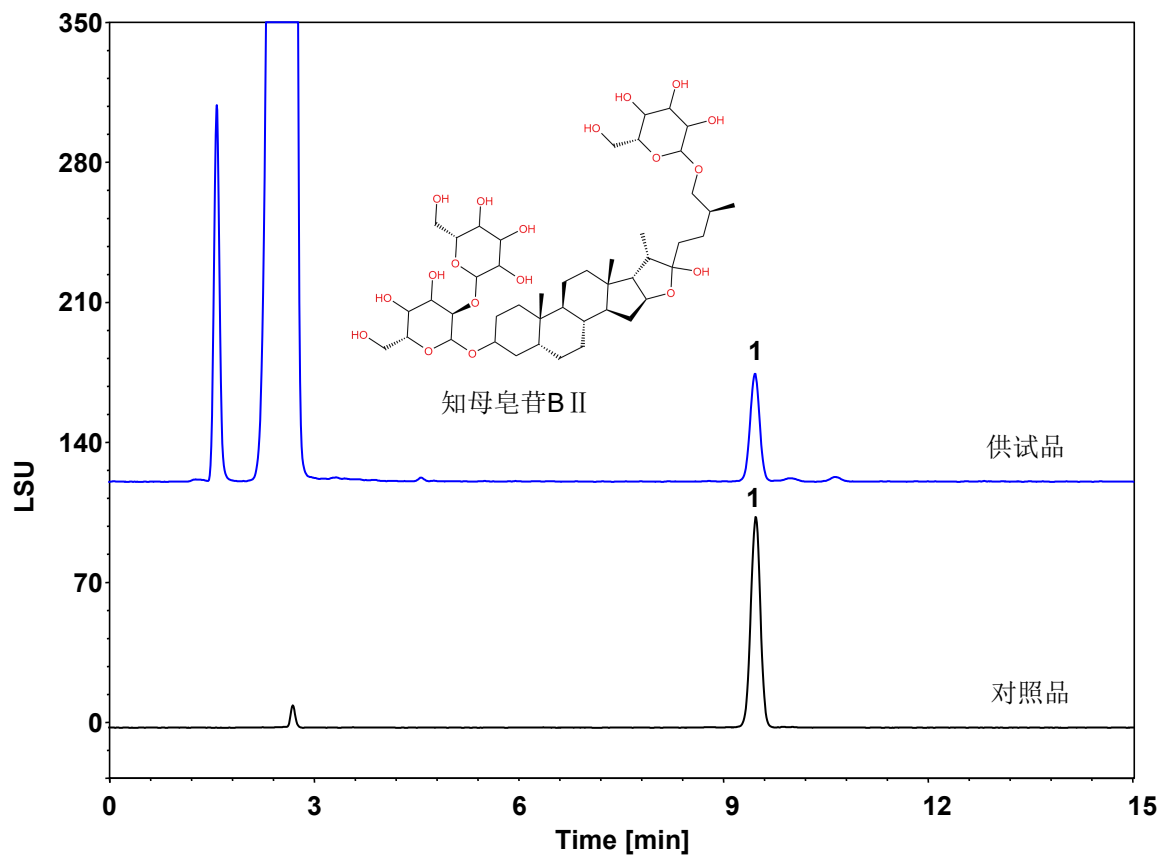


知母 (中国药典)



Column: ChromCore C8, 5 μ m
Dimension: 4.6 \times 250 mm
Mobile Phase: 25/75 v/v 乙腈/水
Flow Rate: 1.0 mL/min
Temperature: 30 $^{\circ}$ C
Injection: 10 μ L
Detection: ELSD:Evap:65 $^{\circ}$ C, Neb:55 $^{\circ}$ C, Gas:1.6 SLM
Instrument: Agilent Infinity II 1260
Sample: 知母
Peak: 1. 知母皂苷B II

| 组分 | 保留时间 (min) | 理论塔板数 (USP) | 拖尾因子 (USP) | 分离度 (USP) |
|----------|------------|-------------|------------|-----------|
| 知母皂苷B II | 9.457 | 20369 | 0.99 | 1.60 |