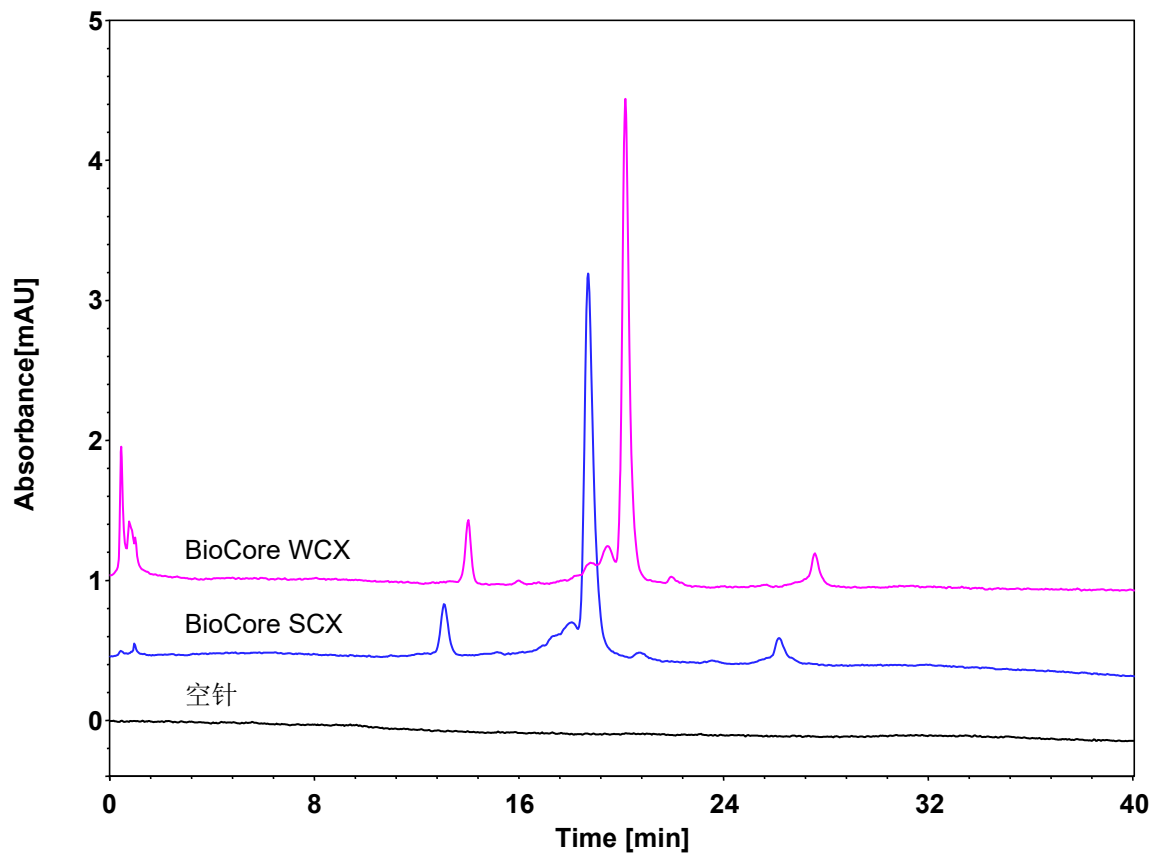


双抗



Columns:

Pink: BioCore WCX, 10 μ m

Blue: BioCore SCX, 10 μ m

Dimension: 4.6 \times 150 mm

Mobile Phase: A) 20 mM phosphate buffer, pH6.5

B) 300 mM NaCl in 20 mM phosphate buffer, pH6.5

Gradient:

t (min)	%A	%B
0	100	0
0.1	100	0
40	50	50
40.1	0	100
43	0	100

Flow Rate: 1.0 mL/min

Temperature: 30 $^{\circ}$ C

Injection: 3 μ L

Detection: UV 280 nm

Instrument: Agilent 1290 Infinity II (Bio)

Sample: 双抗 (pI: 8.25 浓度: 1.72 mg/mL)

