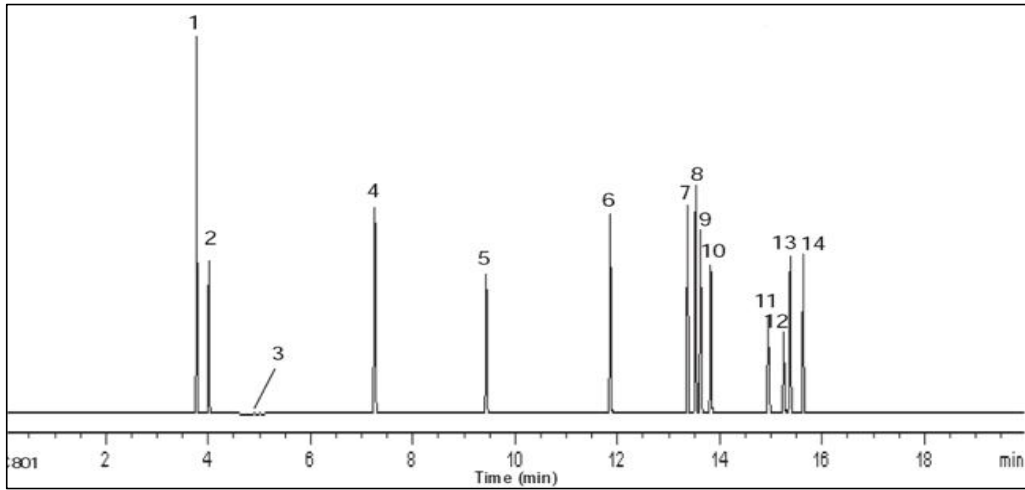


## 硫化物在NanoChrom BP-PLOT GasPro上的分离与检测



Column: NanoChrom BP-PLOT GasPro  
 Dimension: 60m×0.32mm×5μm  
 Carrier: He, flow 3.2 mL/min  
 Inlet: Split, 200 °C, split ratio 10: 1  
 Oven: 35 °C (hold 4 min) to 200 °C (hold 5 min) at 15 °C/min  
 Inject: 5 μL  
 Detector: SCD  
 Peaks:

- 1.COS (COS)
2. Hydrogen Sulfide (硫化氢)
- 3.Propylene (丙烯)
4. Carbon Sulfide (硫化碳)
5. Methyl mercaptan (甲硫醇)
6. Ethyl mercaptan (乙硫醇)
7. Thiofuran (硫呋喃)
8. Dimethyl sulfide (二甲基硫醚)
9. 2-Propyl mercaptan (2-丙基硫醇)
10. 1- Propyl mercaptan (1-丙基硫醇)
11. 2-Methyl-2-propyl mercaptan (2-甲基-2-丙基硫醇)
12. 2-Methyl-1-propyl mercaptan (2-甲基-1-丙基硫醇)
13. 1-Methyl-1-propyl mercaptan (1-甲基-1-丙基硫醇)
14. 1- Butyl mercapta (1-丁硫醇)

n