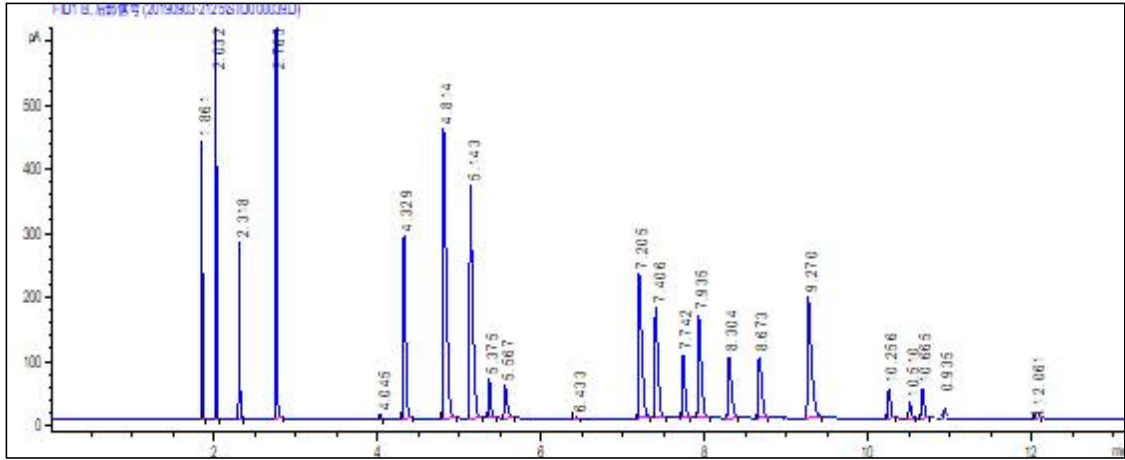




液化石油气组成在NanoChrom BP-PLOT Al₂O₃ "M" 上的分离与检测 (SH/T 0230-2019)



Column: NanoChrom BP-PLOT Al₂O₃ "M"
 Dimension: 50m×0.53mm×15μm
 Carrier: H₂, flow 5 mL/min
 Inlet: Split, 200 °C, split ratio 30: 1
 Oven: 80 °C (hold 2 min) to 180 °C (hold 5 min) at 10 °C/min
 Inject: 250 μL
 Detector: FID 200 °C

Peak	Compound	Compound (Chinese)	Retention time (min)	Resolution
1	Methane	甲烷	1.861	
2	Ethane	乙烷	2.032	
3	Ethylene	乙烯	2.318	
4	Propane	丙烷	2.765	
5	cycloPropane	环丙烷	4.045	
6	Propylene	丙烯	4.329	6.830
7	iso-Butane	异丁烷	4.815	
8	n-Butane	正丁烷	5.143	
9	Propadiene	丙二烯	5.375	4.191
10	Acetylene	乙炔	5.567	
11	methyl-cyclobutane	甲基环丁烯	6.433	
12	trans-butene	反二丁烯	7.205	
13	Butene-1	正丁烯	7.407	3.052
14	iso-butene	异丁烯	7.743	
15	cis-Butene	顺丁烯	7.936	
16	iso-Pentane	异戊烷	8.304	
17	n-Pentane	正戊烷	8.673	
18	1, 3-butadiene	1, 3-丁二烯	9.271	
19	trans-pentene	反2-戊烯	10.257	
20	Pentene-1	正戊烯	10.51	
21	iso-Pentene	异戊烯	10.665	
22	cis-Pentene	顺戊烯	10.935	