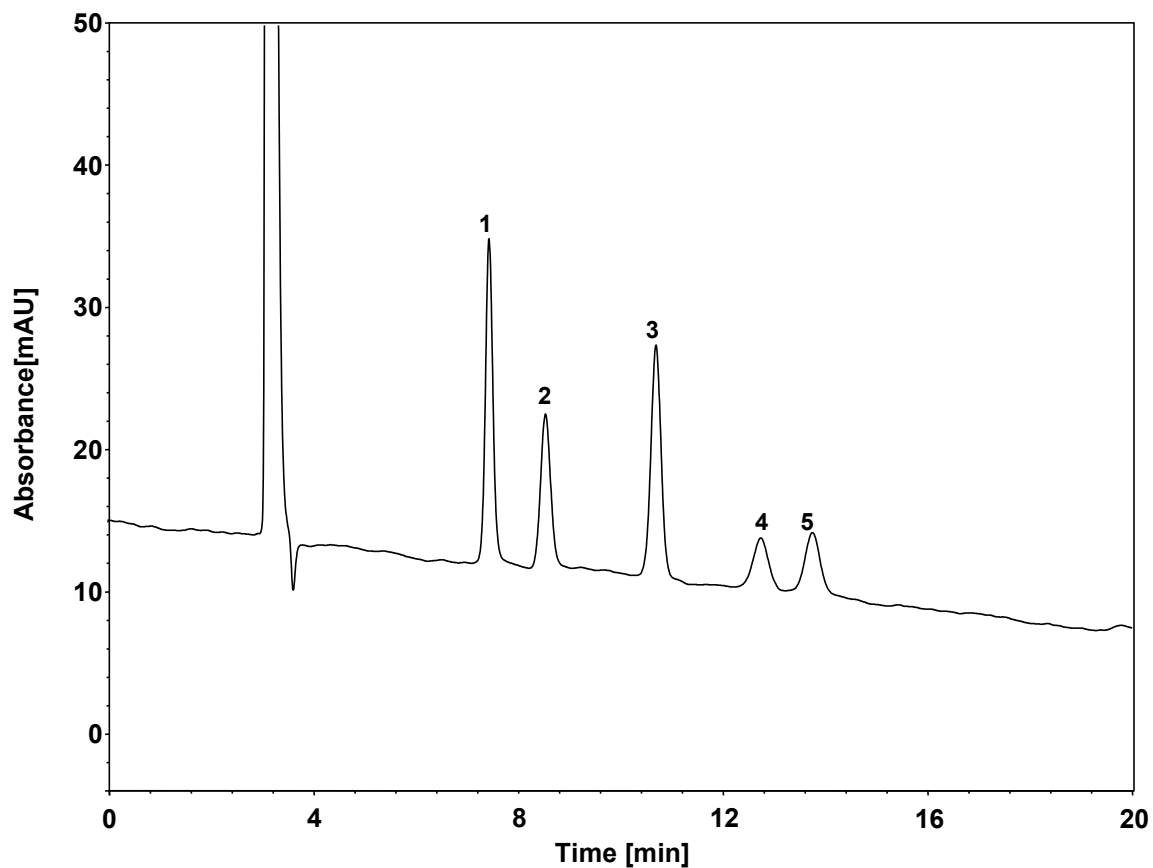


# 果糖、葡萄糖、蔗糖、麦芽糖、乳糖



Column: ChromCore NH<sub>2</sub>, 5 μm  
Dimension: 4.6×250 mm  
Mobile Phase: 70/30 v/v 乙腈/水  
Flow Rate: 1.0 mL/min  
Temperature: 40 °C  
Injection: 5 μL  
Detection: RID  
Sample: 五种糖 (5 mg/mL, 水溶解)  
Peaks:  
1. 果糖  
2. 葡萄糖  
3. 蔗糖  
4. 麦芽糖  
5. 乳糖