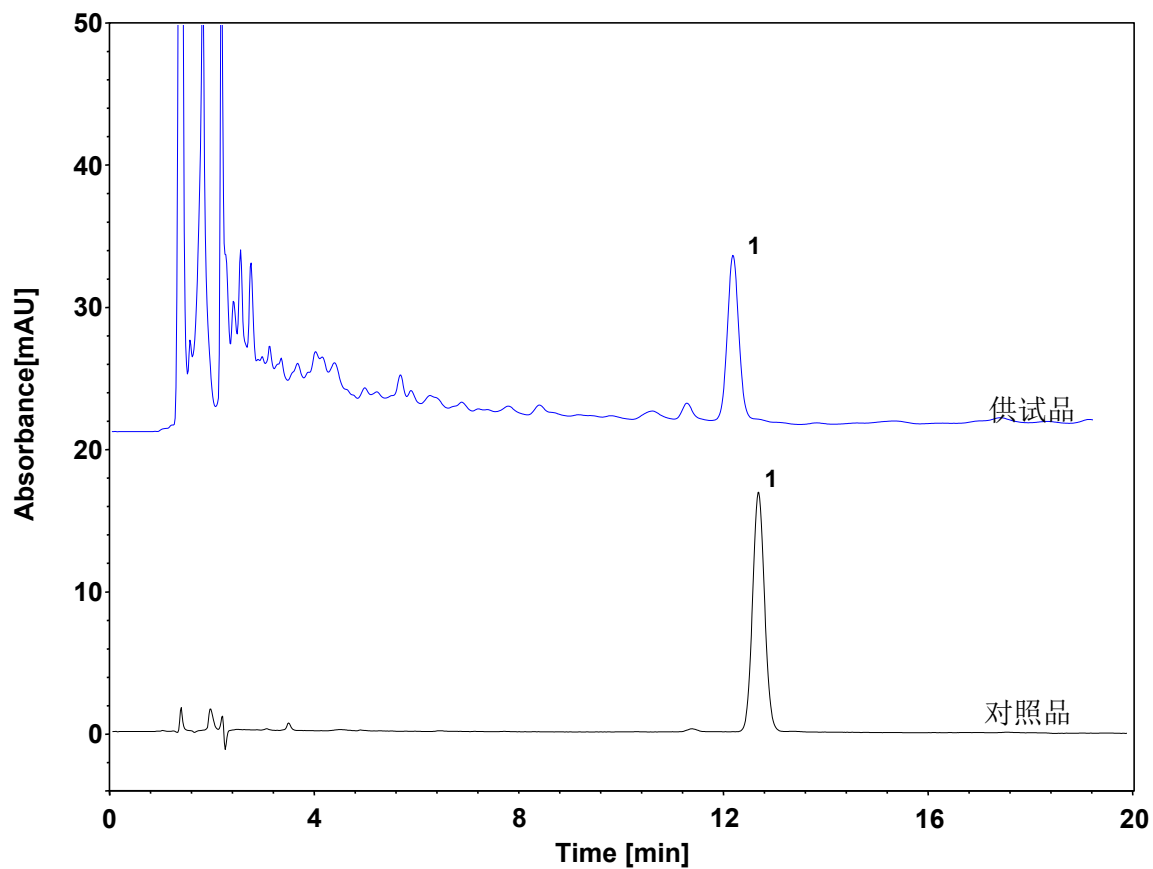
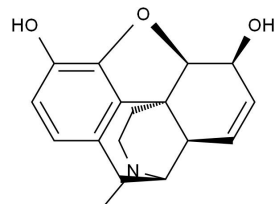


止咳宝



Column: ChromCore C18, 5 μ m
Dimension: 4.6 \times 150 mm
Mobile Phase: 12/88 v/v 乙腈/0.1%磷酸水, 含0.1%庚烷磺酸钠
Flow Rate: 1.0 mL/min
Temperature: 25 $^{\circ}$ C
Injection: 10 μ L
Detection: UV 210 nm
Sample: 止咳宝
Peak: 1. 吗啡



吗啡