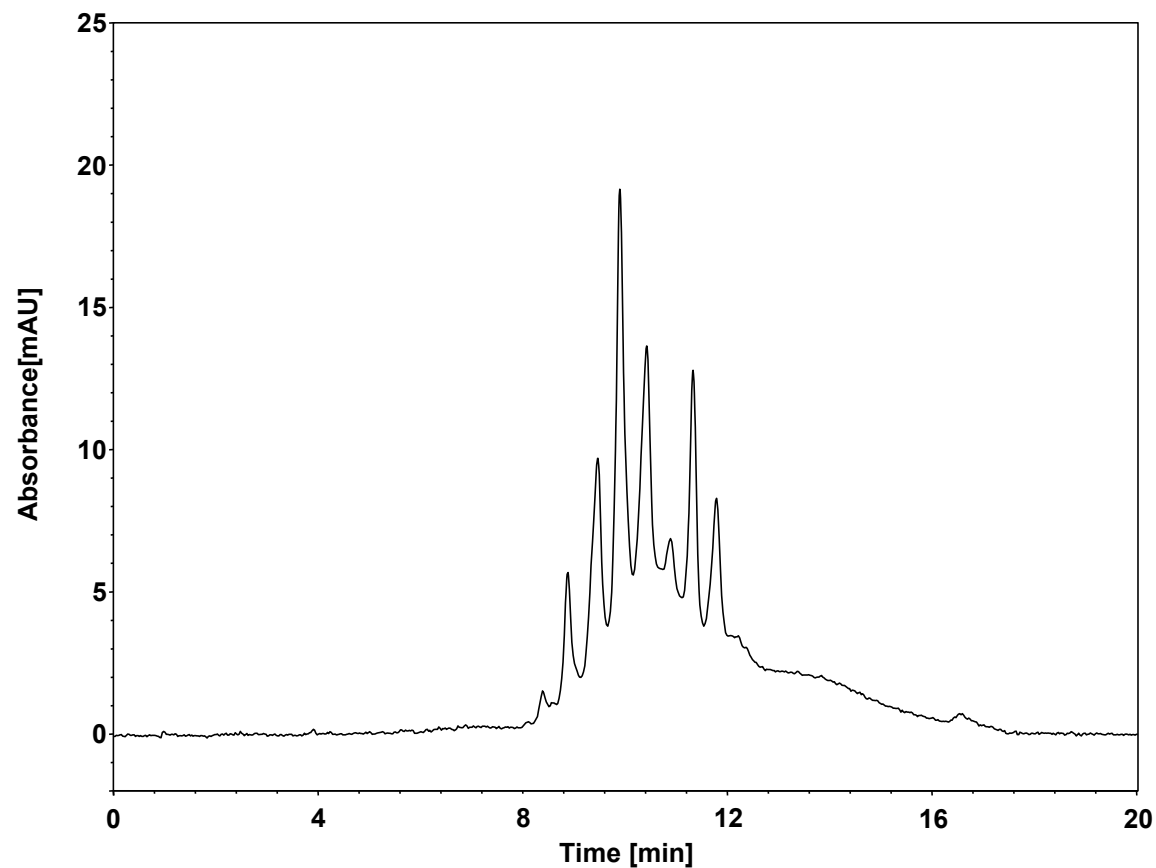


# 卵清蛋白电荷异质体



Column: BioCore SAX, 10  $\mu$ m  
Dimension: 4.6  $\times$  150 mm  
Mobile Phase: A) 20 mM Tris, pH8.5  
B) 500 mM NaCl in 20 mM Tris, pH8.5  
Gradient: 

t(min)	%A	%B
-15	100	0
0	100	0
15	50	50
15.1	0	100
20	0	100

  
Flow Rate: 1.0 mL/min  
Injection: 10  $\mu$ L  
Temperature: 30  $^{\circ}$ C  
Detection: UV 280 nm  
Sample: Ovalbumin (5.0 mg/mL in H<sub>2</sub>O)