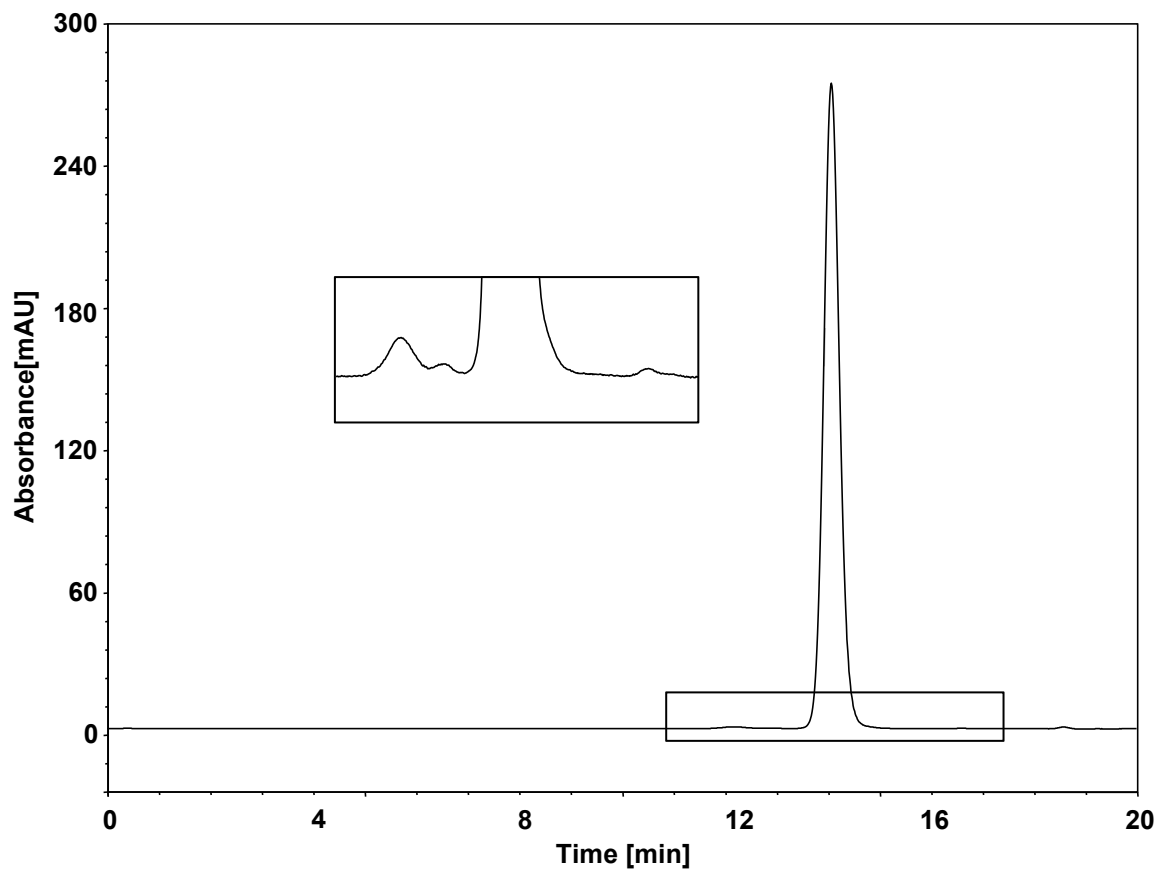


利妥昔-体积排阻



Column: BioCore SEC-300, 5 μ m
Dimension: 7.8 \times 300 mm
Mobile Phase: 90/10 v/v 300 mM NaCl in 50 mM phosphate buffer, pH6.8 /MeCN
Flow Rate: 0.6 mL/min
Temperature: 30 $^{\circ}$ C
Injection: 10 μ L
Detection: UV 280 nm
Sample: Rituximab (\sim 5.0 mg/mL in H₂O)