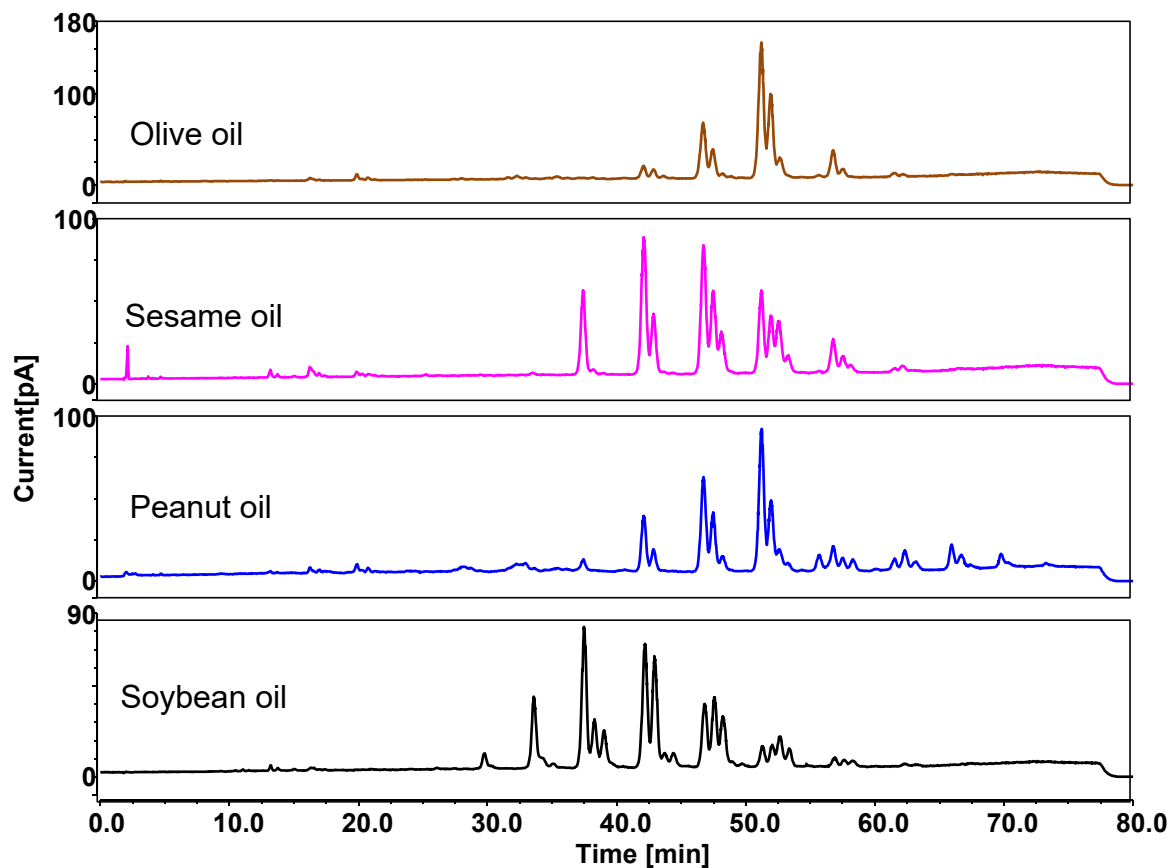


脂质



Column: ChromCore C30, 5 μ m
Dimension: 4.6 \times 150 mm
Mobile Phase: A) MeCN
B) 100 mM NH₄OAc, pH5
C) IPA

Gradient:	t (min)	%A	%B	%C
	-10	85	5	10
	0	85	5	10
	10	65	5	30
	60	20	5	75
	70	5	5	90
	80	5	5	90

Flow Rate: 1.0 mL/min
Temperature: 30 $^{\circ}$ C
Injection: 5 μ L
Detection: CAD
Sample: Cooking oils (5 mg/mL)