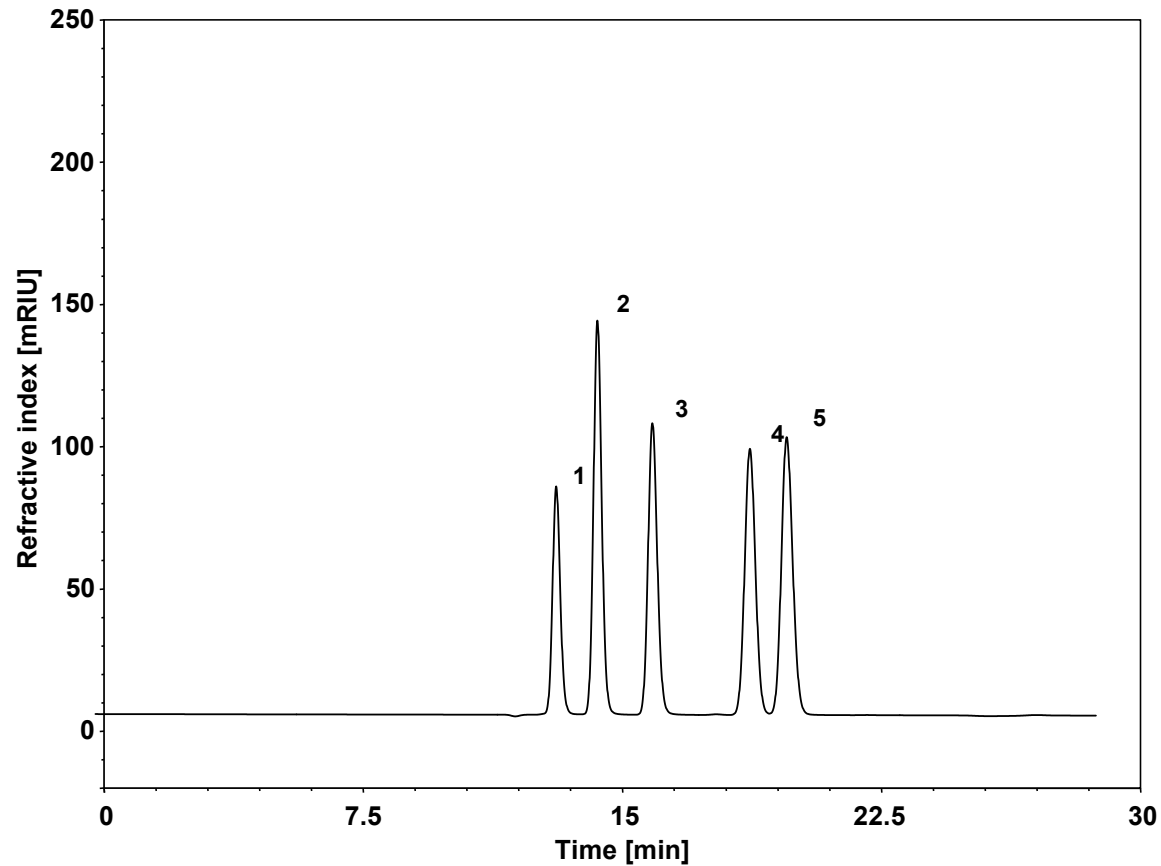


# 有机酸



Column: ChromCore Sugar-10H, 6  $\mu$ m  
Dimension: 7.8  $\times$  300 mm  
Mobile Phase: 9 mM 硫酸水溶液  
Flow Rate: 0.5 mL/min  
Temperature: 65  $^{\circ}$ C  
Injection: 5  $\mu$ L  
Detection: RID  
Peaks:  
1. Citric Acid (柠檬酸)  
2. Malic Acid (苹果酸)  
3. Succinic Acid (琥珀酸)  
4. Formic Acid (甲酸)  
5. Acetic Acid (乙酸)