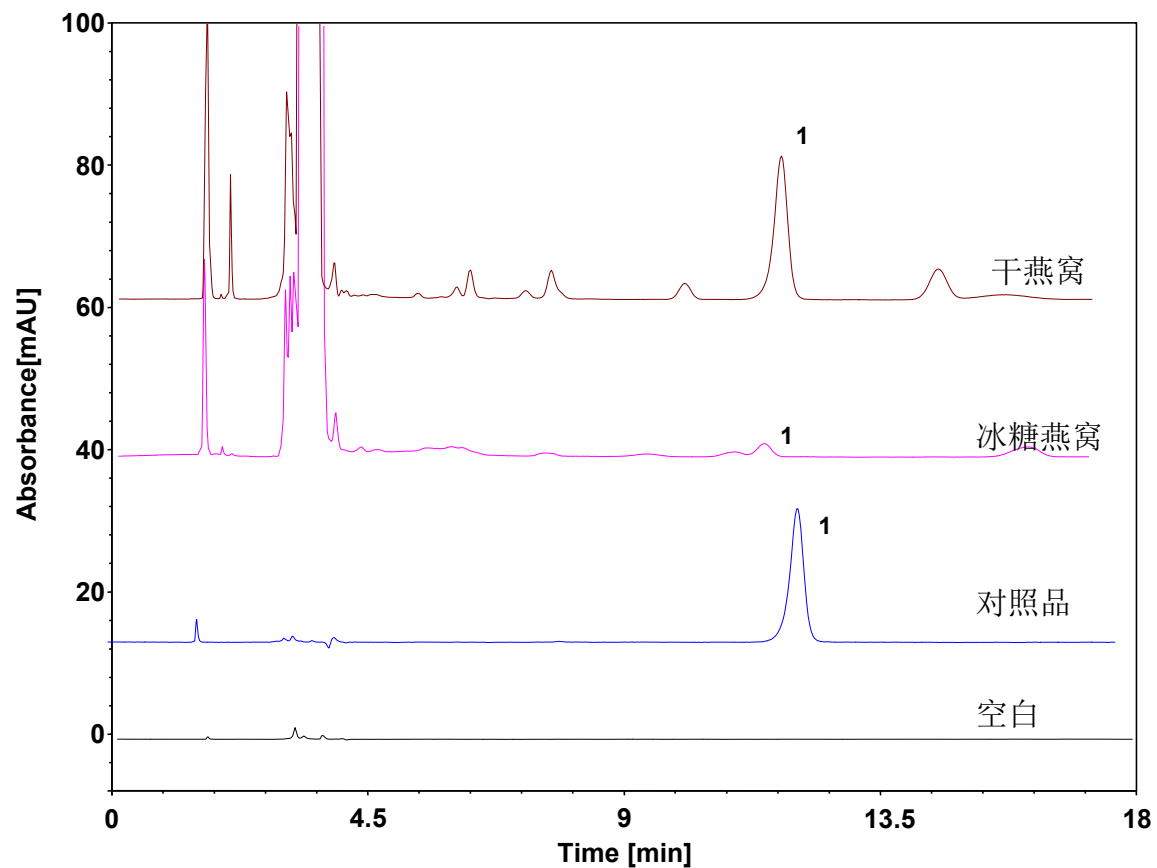


燕窝中唾液酸 (GB/T 30636-2014)



Column: ChromCore 300 SCX, 5 μ m
Dimension: 4.6 \times 250 mm
Mobile Phase: 90/10 v/v 乙腈/0.1%磷酸水
Flow Rate: 1.0 mL/min
Temperature: 30 $^{\circ}$ C
Injection: 10 μ L
Detection: UV 205 nm
Sample: 干燕窝和冰糖燕窝制品
Peak: 1. 唾液酸 (100 μ g/mL)