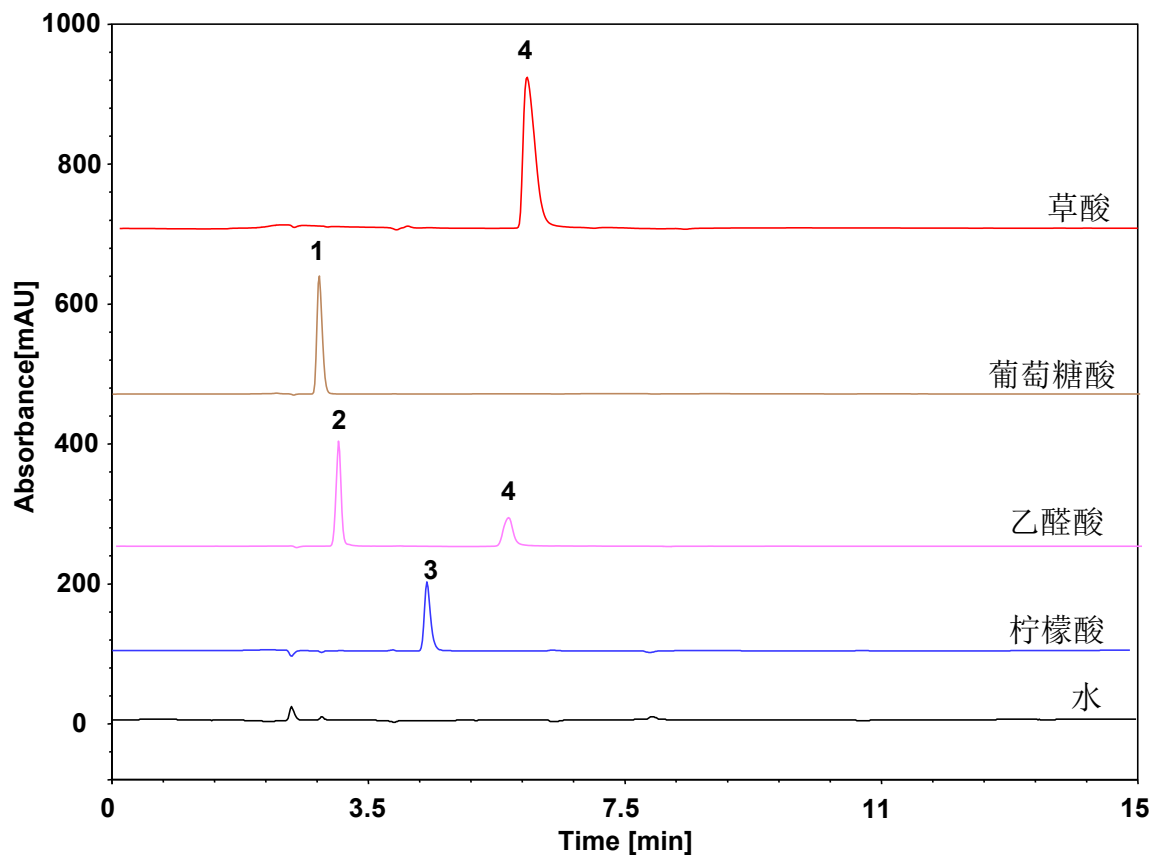


# 葡萄糖酸、乙醛酸、柠檬酸、草酸



Column: ChromCore AR C18, 5  $\mu$ m  
Dimension: 4.6  $\times$  250 mm  
Mobile Phase: 5/95 v/v 乙腈/50 mM磷酸二氢钠 (0.1%四丁基硫酸氢铵, pH2.0)  
Flow Rate: 1.0 mL/min  
Temperature: 35  $^{\circ}$ C  
Injection: 10  $\mu$ L  
Detection: UV 210 nm  
Sample: 有机酸  
Peaks:  
1. 葡萄糖酸  
2. 乙醛酸  
3. 柠檬酸  
4. 草酸