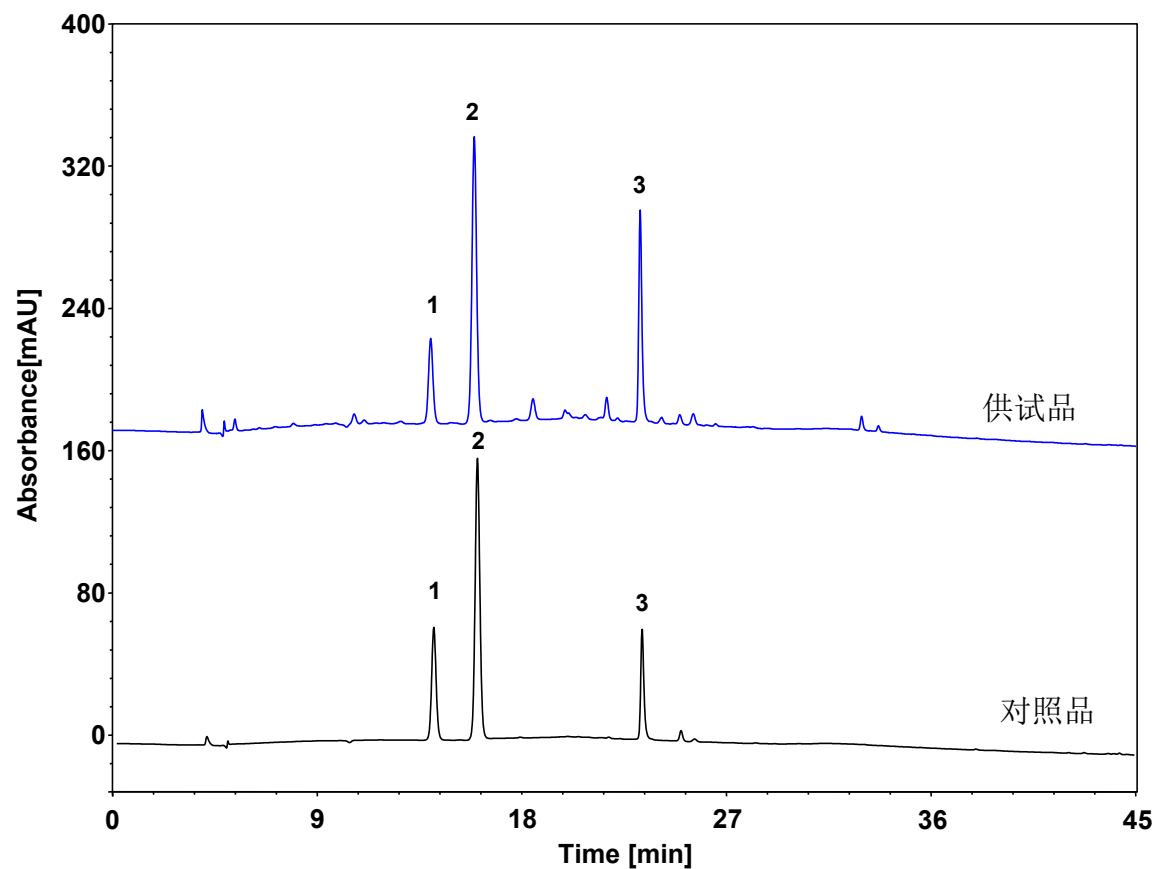


白芍总皂苷 (标准公示稿)



Column: ChromCore AR C18, 5 μ m
Dimension: 4.6 \times 250 mm
Mobile Phase: A) 乙腈
B) 0.1/0.1/100 v/v/v 三乙胺/磷酸/水
Gradient:

t (min)	%A	%B
0	14	86
10	17	83
24	32	68
45	70	30
46	14	86

Flow Rate: 0.8 mL/min
Temperature: 20 $^{\circ}$ C
Injection: 5 μ L
Detection: UV 230 nm
Sample: 白芍总苷
Peaks: 1. 芍药内酯苷
2. 芍药苷
3. 1, 2, 3, 4, 6-五没食子酰基葡萄糖