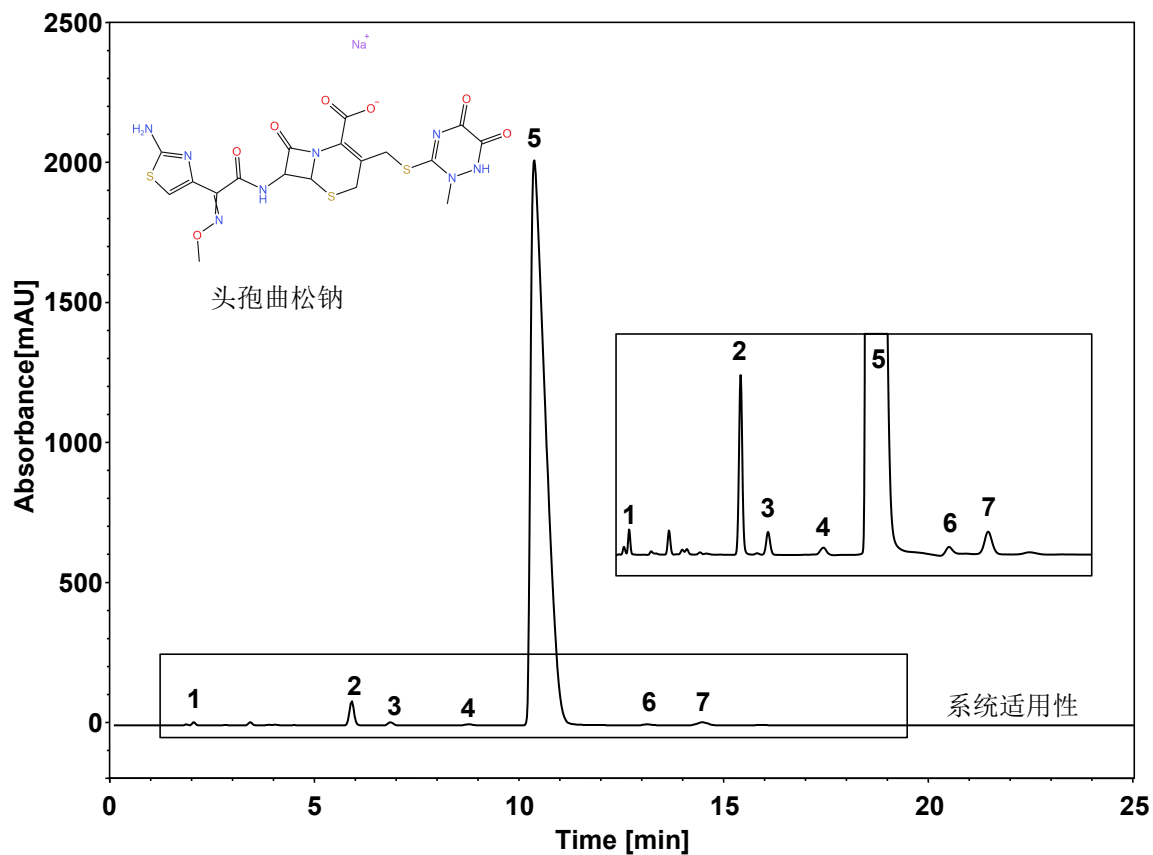


# 注射用头孢曲松钠



Column: ChromCore AR C18, 5  $\mu$ m  
 Dimension: 4.6  $\times$  250 mm  
 Mobile Phase: 50/5.5/5/44 v/v 乙腈/磷酸盐缓冲液, pH7.5/柠檬酸溶液, pH5.0 /水, 每升溶液中加2 g四癸基溴化铵和2 g四庚基溴化铵  
 Flow Rate: 1.5 mL/min  
 Temperature: 25  $^{\circ}$ C  
 Injection: 10  $\mu$ L  
 Detection: UV 254 nm  
 Instrument: Waters e2695  
 Sample: 头孢曲松钠  
 Peaks: 1. 杂质B 2. 杂质C 3. 杂质D 4. 杂质E  
 5. 头孢曲松 6. 杂质H 7. 杂质A

组分	保留时间 (min)	理论塔板数 (USP)	拖尾因子 (USP)	分离度 (USP)
杂质B	1.964	2832	0.995	/
杂质C	5.917	12026	1.055	21.7
杂质D	6.809	11188	1.060	3.72
杂质E	8.681	6695	1.306	5.49
头孢曲松	10.166	1561	3.319	2.05
杂质H	13.230	13477	1.020	4.12
杂质A	14.605	12174	1.089	2.75