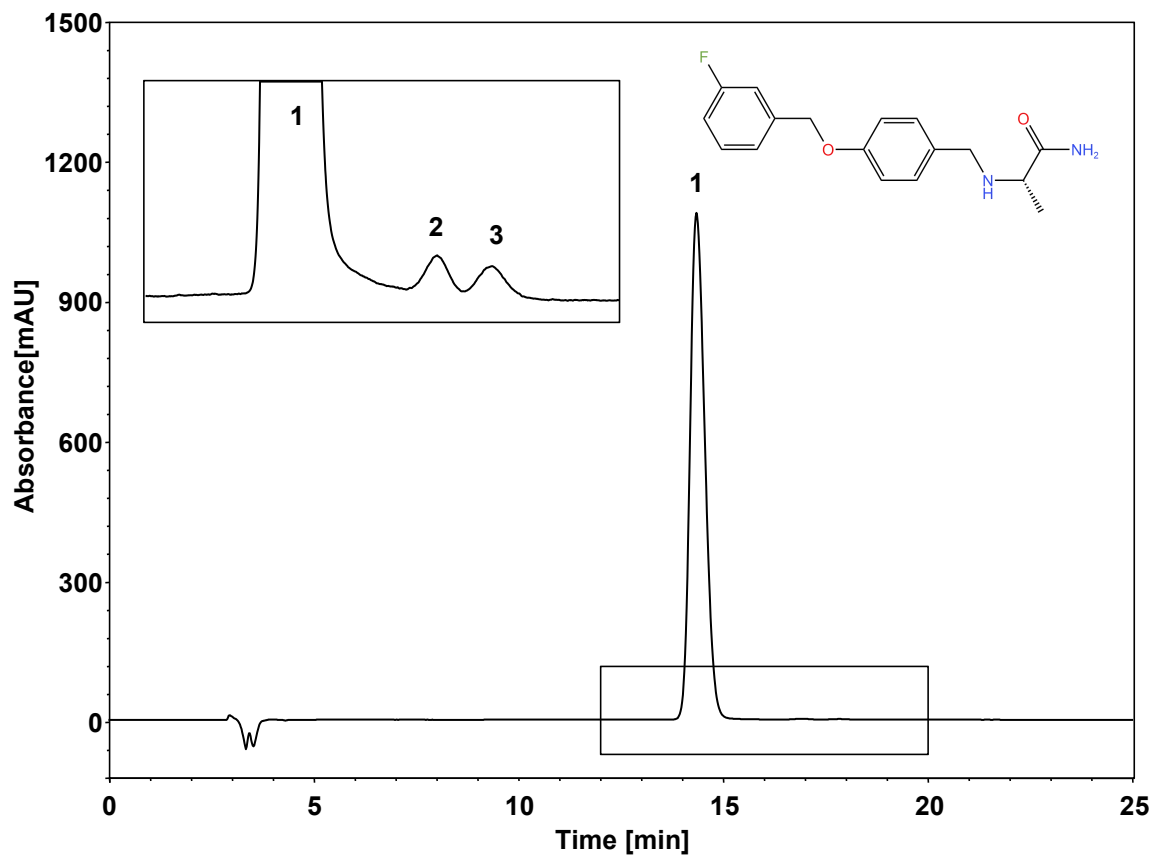


沙非胺



Column: ChiralCore Amy-S, 5 μ m
Dimension: 4.6 \times 250 mm
Mobile Phase: 75/25/0.1 v/v 正己烷/乙醇/二乙胺
Flow Rate: 1.0 mL/min
Temperature: 35 $^{\circ}$ C
Injection: 10 μ L
Detection: UV 225 nm
Instrument: 福立LC 5090
Sample: 沙非胺

组分	保留时间 (min)	理论塔板数 (USP)	拖尾因子 (USP)	分离度 (USP)
1	14.339	7427	1.228	/
2	16.912	9723	0.957	3.819
3	17.836	7444	1.091	1.224