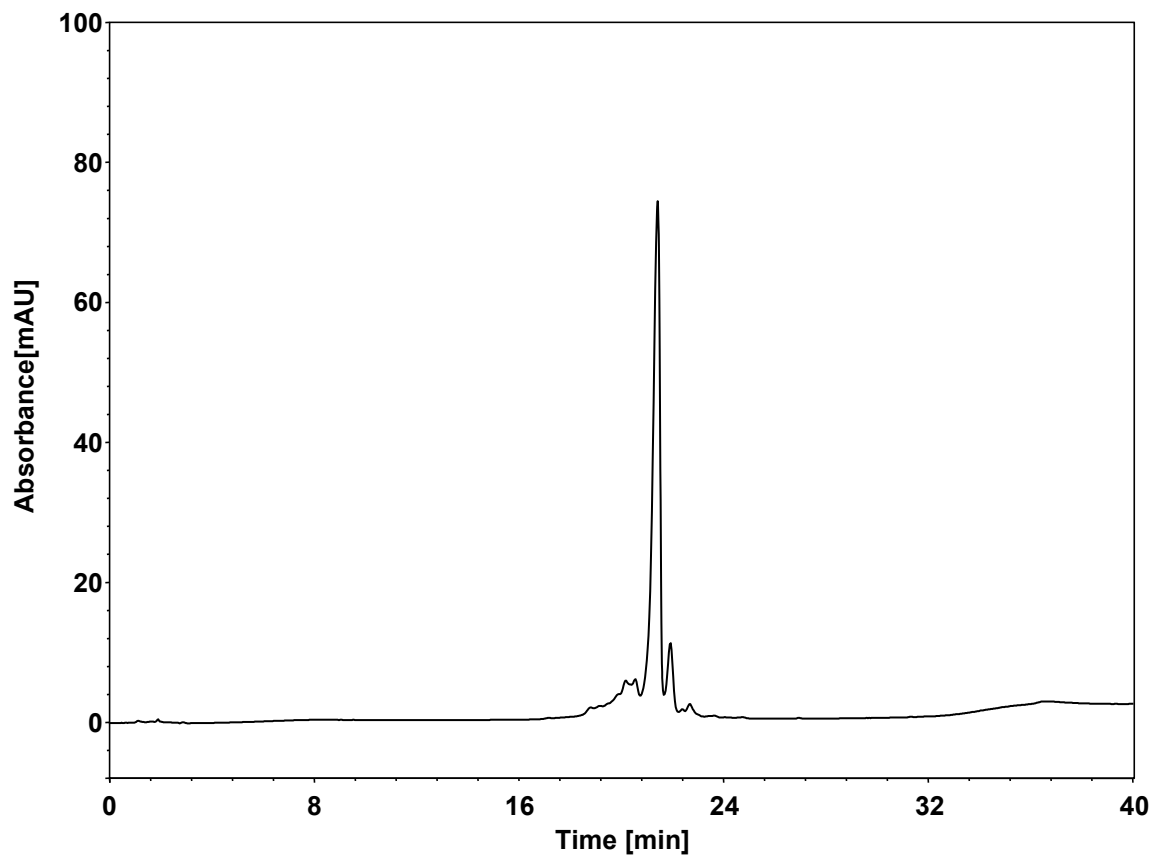


# 单抗



Column: BioCore WCX, 10  $\mu$ m  
Dimension: 4.6  $\times$  250 mm  
Mobile Phase: A) pH gradient buffer A, pH5.0  
B) pH gradient buffer B, pH10.8

| Gradient: | t (min) | %A | %B  |
|-----------|---------|----|-----|
|           | 0       | 80 | 20  |
|           | 0.5     | 80 | 20  |
|           | 40      | 0  | 100 |
|           | 45      | 0  | 100 |
|           | 46      | 80 | 20  |
|           | 60      | 80 | 20  |

Flow Rate: 0.8 mL/min  
Temperature: 40  $^{\circ}$ C  
Injection: 10  $\mu$ L  
Detection: UV 280 nm  
Instrument: Agilent Infinity II 1290 (Bio)  
Sample: 单抗 (6 mg/mL pI: 6.8)