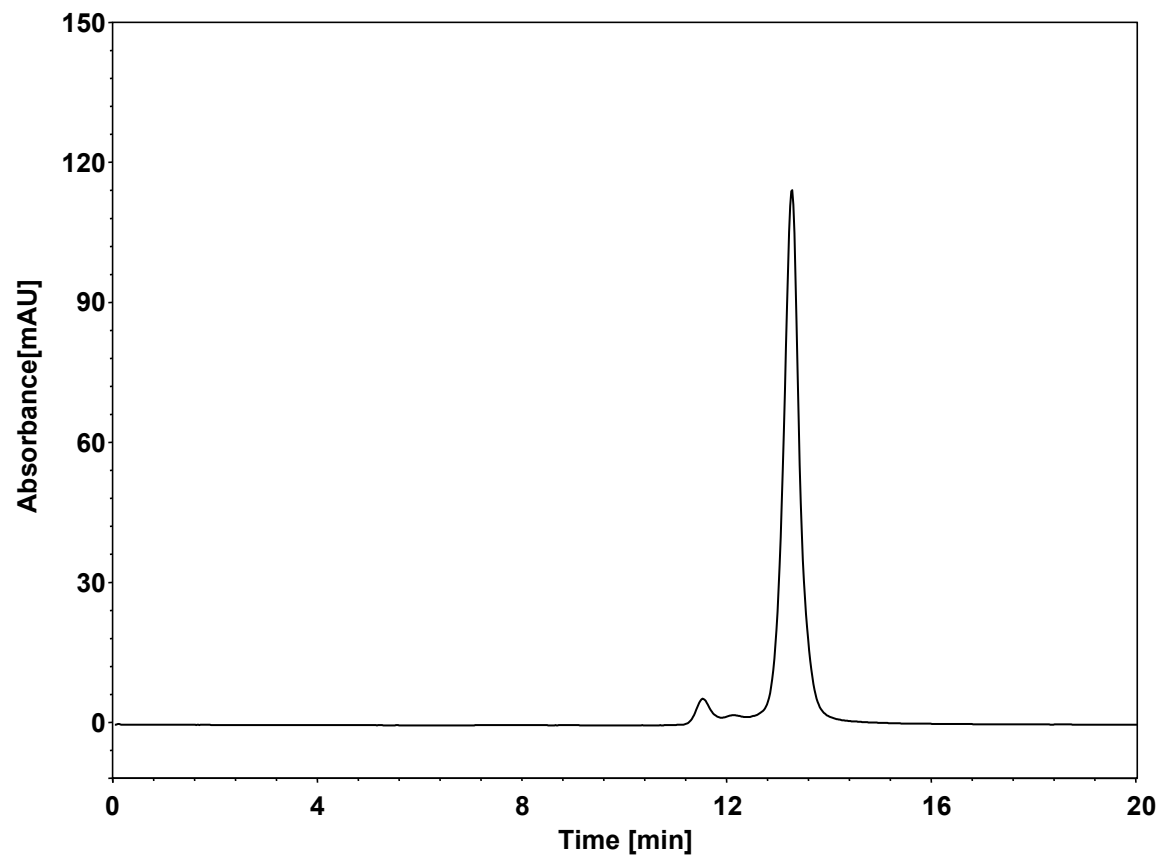


蛋白



Column: BioCore SEC-150, 3 μm
Dimension: 7.8 \times 300 mm
Mobile Phase: 55/45/0.1 v/v 水/乙腈/三氟乙酸
Flow Rate: 0.5 mL/min
Temperature: 30 $^{\circ}\text{C}$
Injection: 20 μL
Detection: UV 280 nm
Instrument: Agilent Infinity II 1260 (Bio)
Sample: 蛋白 (MW:22 kD, pI:8.6 浓度:2 mg/mL)