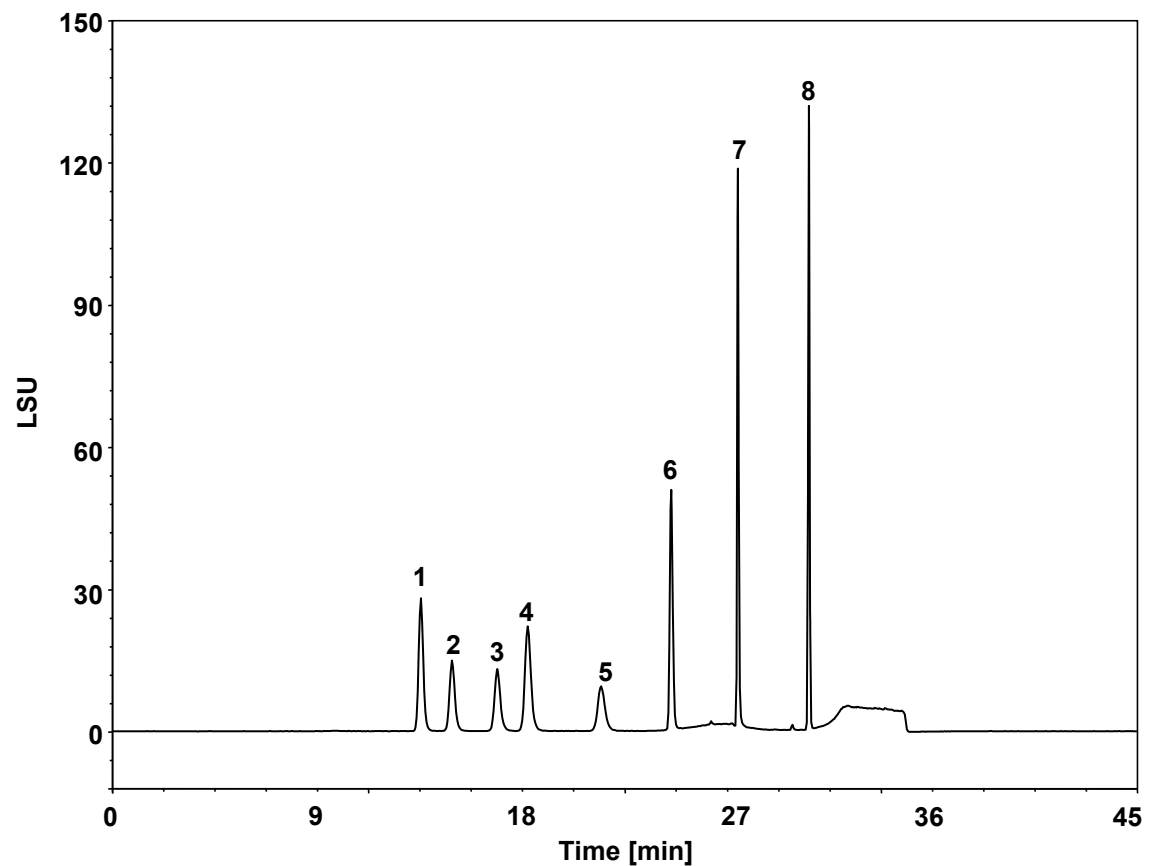


# 8种人体必需氨基酸



Column: ChromCore HILIC-ZW, 5  $\mu$ m

Dimension: 4.6  $\times$  150 mm

Mobile Phase: A) MeCN

B) 100 mM HCOONH<sub>4</sub> buffer, pH3.0

Gradient: t (min) %A %B

0 90 10

20 90 10

30 50 50

33 50 50

33.1 90 10

45 90 10

Flow Rate: 1.0 mL/min

Temperature: 30  $^{\circ}$ C

Injection: 2  $\mu$ L

Detection: ELSD 1290 (Evap: 65  $^{\circ}$ C, Neb: 55  $^{\circ}$ C, Gas: 1.60 SLM)

Instrument: Agilent Infinity II 1290 四元系统

Sample: 8 amino acids (0.5 mg/mL)

Peaks:

1. Phenylalanine (苯丙氨酸)

2. Leucine (亮氨酸)

3. Isoleucine (异亮氨酸)

4. Tryptophan (色氨酸)

5. Methionine (甲硫氨酸)

6. Valine (缬氨酸)

7. Threonine (苏氨酸)

8. Lysine (赖氨酸)