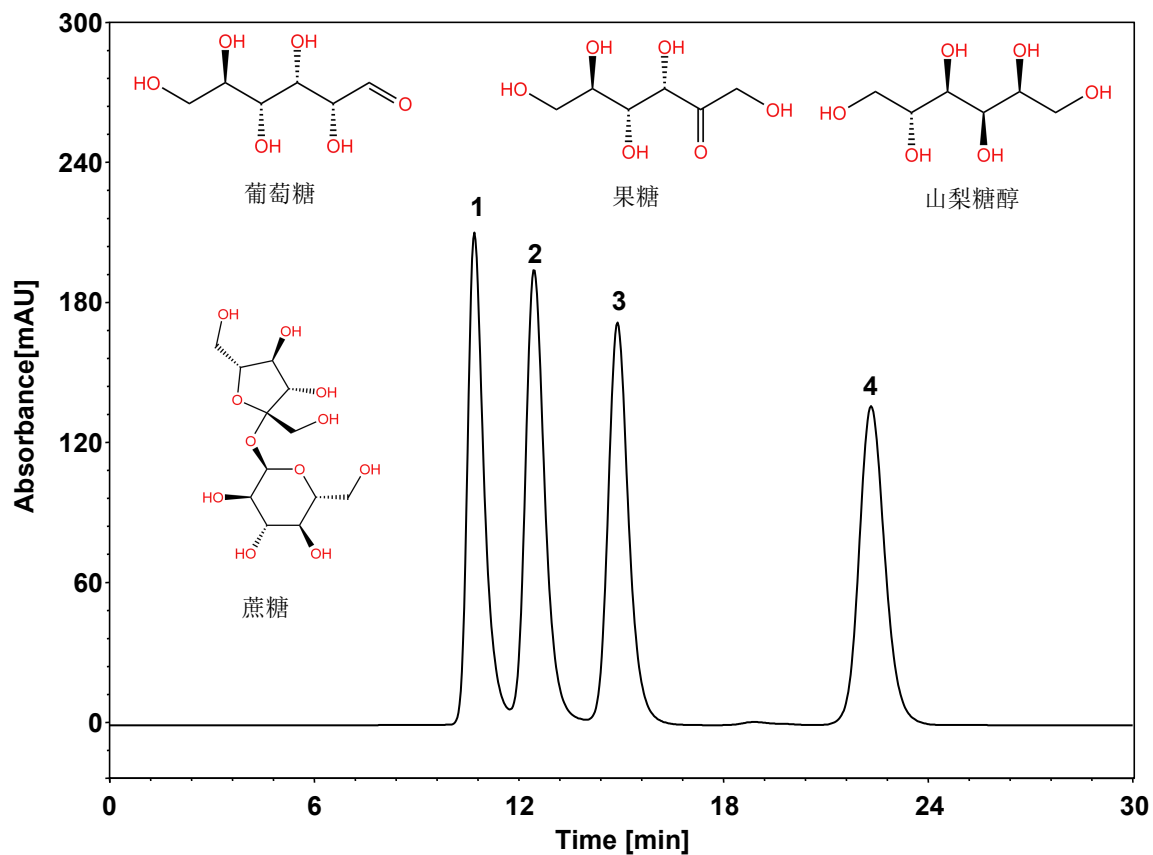


葡萄糖、果糖、蔗糖、山梨糖醇



Column: ChromCore Sugar-10Ca, 6 μ m
Dimension: 7.8 \times 300 mm
Mobile Phase: 水
Flow Rate: 0.5 mL/min
Temperature: 85 $^{\circ}$ C
Injection: 20 μ L
Detection: RID 40 $^{\circ}$ C
Instrument: 岛津LC-2030C
Sample: 蔗糖、葡萄糖、果糖、山梨糖醇
Peak:

组分	保留时间 (min)	理论塔板数 (USP)	拖尾因子 (USP)	分离度 (USP)
蔗糖	10.698	2516	1.500	/
葡萄糖	12.448	2381	1.254	1.868
果糖	14.896	3066	1.220	2.335
山梨糖醇	22.335	4324	1.149	6.110