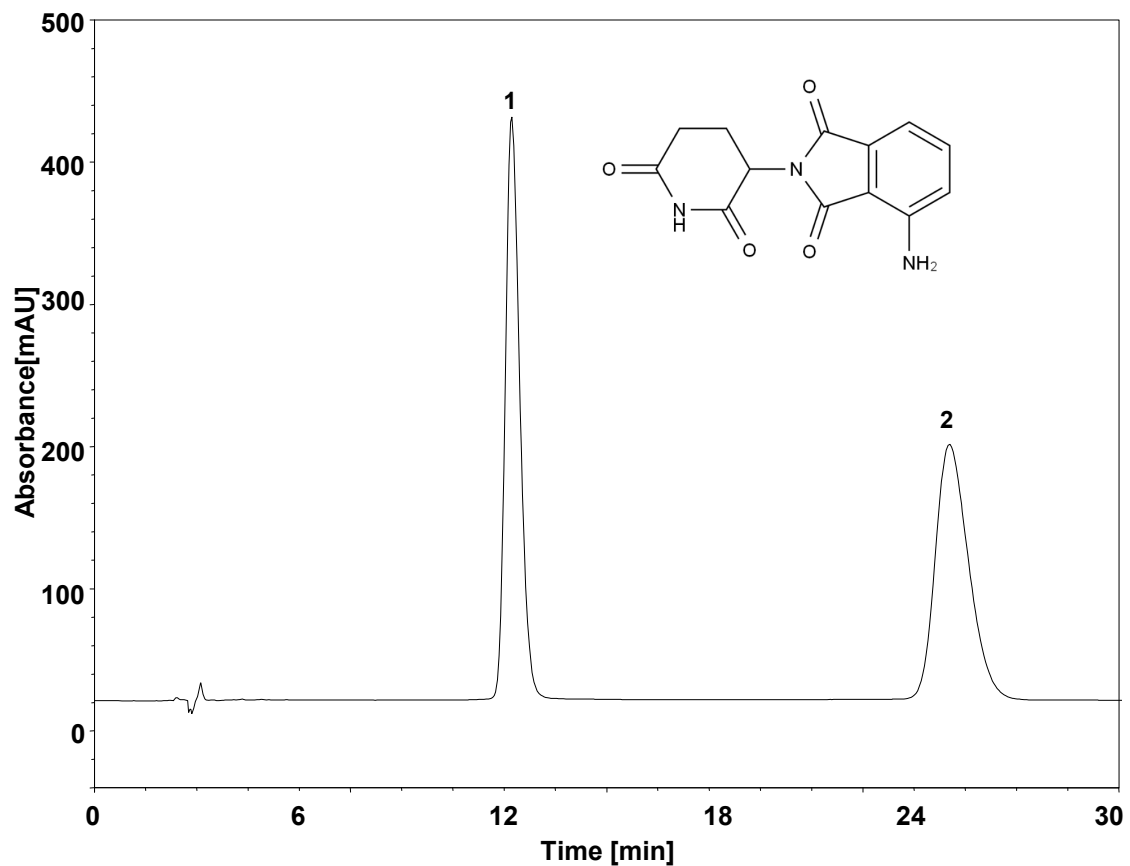


帕马度胺



Column: ChiralCore Amy-D, 5 μm
Dimension: 4.6 \times 250 mm
Mobile Phase: 100/0.1 v/v Methanol/diethylamine
Flow Rate: 1.0 mL/min
Temperature: RT
Injection: 20 μL
Detection: UV 254 nm
Instrument: 伍丰LC-100
Sample: 帕马度胺

组分	保留时间 (min)	理论塔板数 (USP)	拖尾因子 (USP)	分离度 (USP)
1	12.090	4154	1.35	/
2	24.823	3200	1.26	10.17