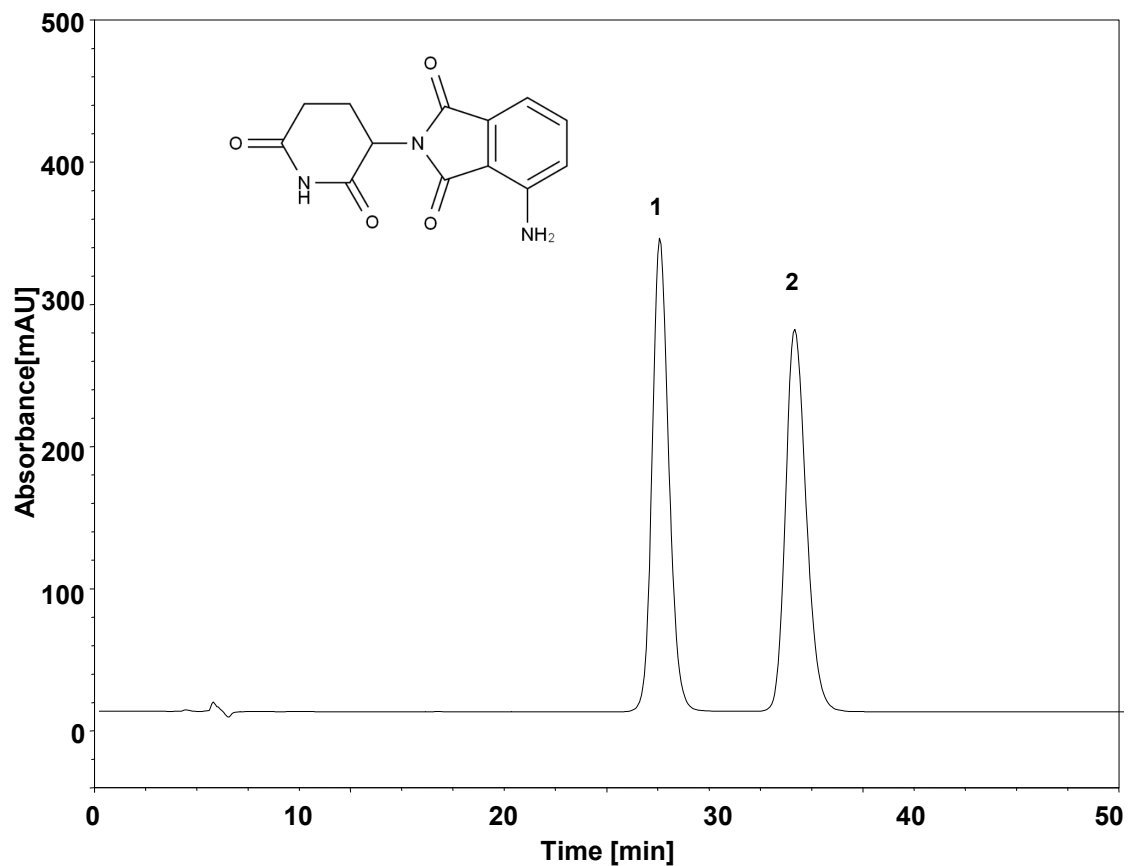


帕马度胺



Column: ChiralCore Amy-D, 5 μ m
Dimension: 4.6 \times 250 mm
Mobile Phase: 100/0.1 v/v Ethanol/diethylamine
Flow Rate: 0.5 mL/min
Temperature: RT
Injection: 10 μ L
Detection: UV 254 nm
Instrument: 伍丰LC-100
Sample: 帕马度胺

组分	保留时间 (min)	理论塔板数 (USP)	拖尾因子 (USP)	分离度 (USP)
1	27.382	5286	1.19	/
2	33.974	5302	1.26	3.91