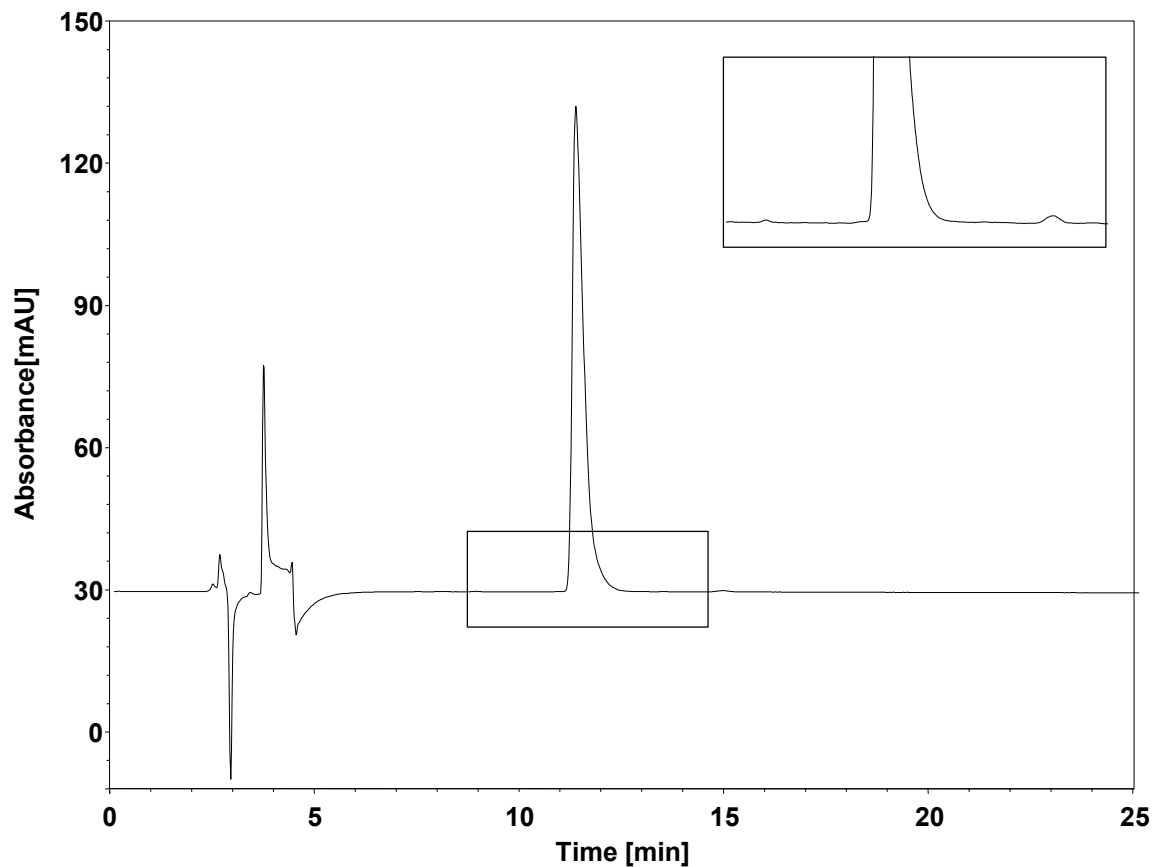
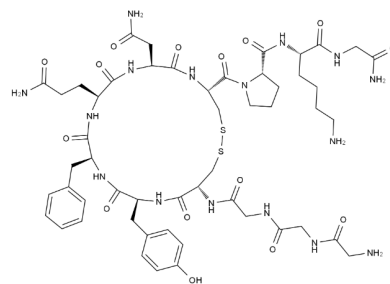


# 醋酸特利加压素



Column: ChromCore Silica, 5  $\mu$ m  
 Dimension: 4.6  $\times$  250 mm  
 Mobile Phase: 83/17/0.04 v/v/v 乙腈/水/三氟乙酸  
 Flow Rate: 1.2 mL/min  
 Temperature: 40  $^{\circ}$ C  
 Injection: 20  $\mu$ L  
 Detection: UV 210 nm  
 Instrument: Waters 2695  
 Sample: 醋酸特利加压素



特利加压素