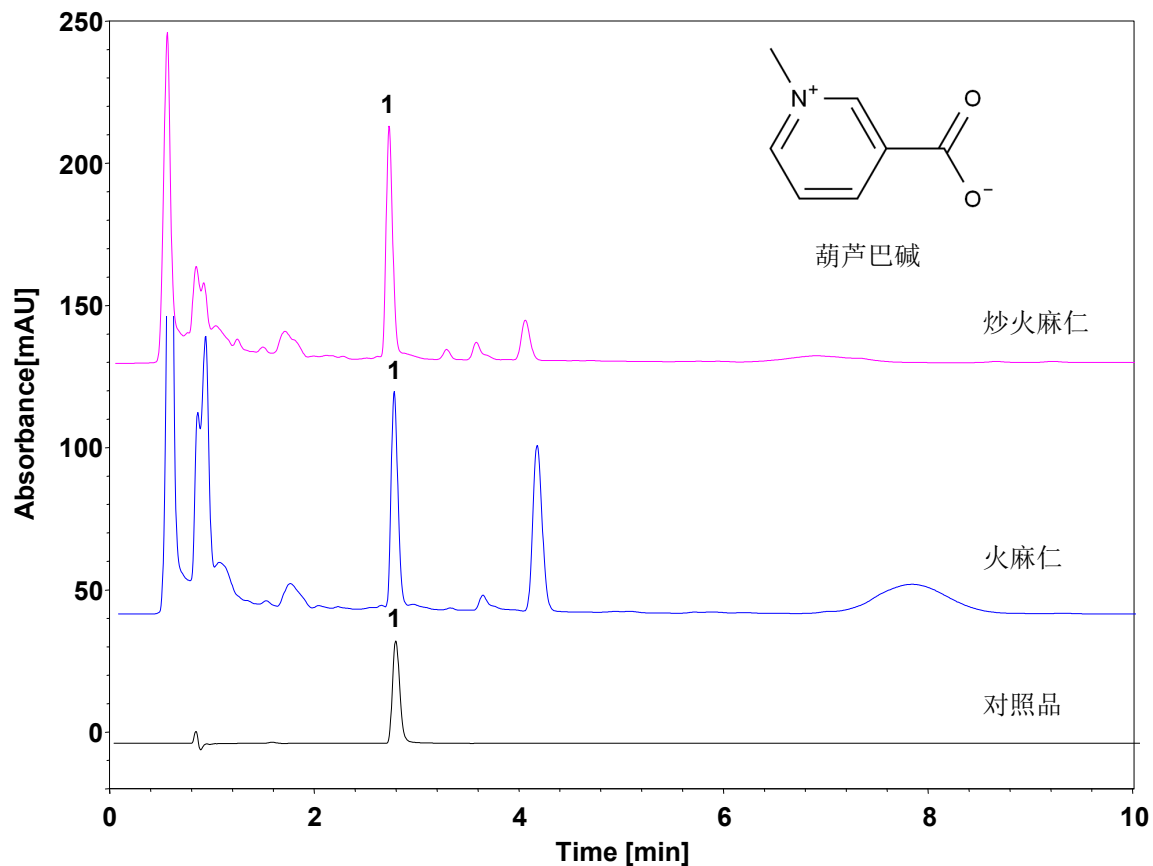


火麻仁配方颗粒 (含量测定)



Column: ChromCore AQ C18, 1.8 μ m
Dimension: 2.1 \times 100 mm
Mobile Phase: 20/80/0.1 v/v 甲醇/0.05% 十二烷基磺酸钠溶液/冰醋酸
Flow Rate: 0.3 mL/min
Temperature: 30 $^{\circ}$ C
Injection: 2 μ L
Detection: UV 265 nm
Instrument: Agilent 1290
Sample: 火麻仁配方颗粒
Peak: 1. 葫芦巴碱

组分	保留时间 (min)	理论塔板数 (USP)	拖尾因子 (USP)	分离度 (USP)
葫芦巴碱	2.752	7422	1.28	/