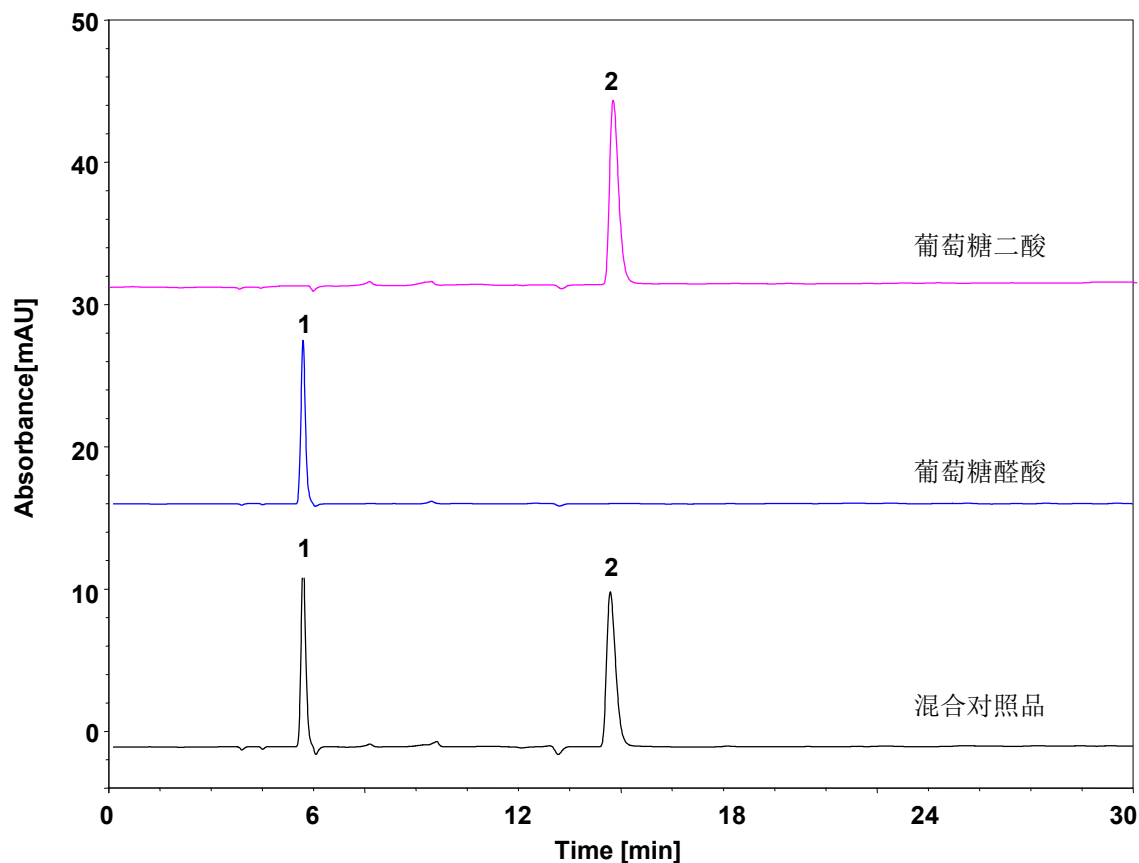
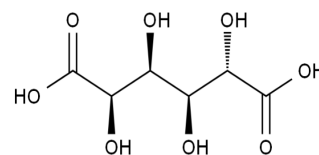


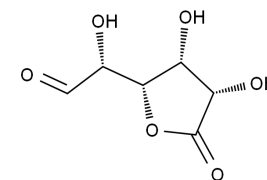
葡萄糖二酸与葡萄糖醛酸



Column: ChromCore C18, 5 μ m
Dimension: 4.6 \times 250 mm
Mobile Phase: 5/95 v/v 甲醇/10 mM磷酸氢二钾溶液 (含10 mM四丁基硫酸氢铵), pH7.2
Flow Rate: 0.7 mL/min
Temperature: 30 $^{\circ}$ C
Injection: 2 μ L
Detection: UV 210 nm
Instrument: 岛津 LC-2030C
Sample: 葡萄糖二酸 (5 mg/mL)与葡萄糖醛酸 (5 mg/mL)
Peaks:
1. 葡萄糖醛酸
2. 葡萄糖二酸



葡萄糖二酸



葡萄糖醛酸