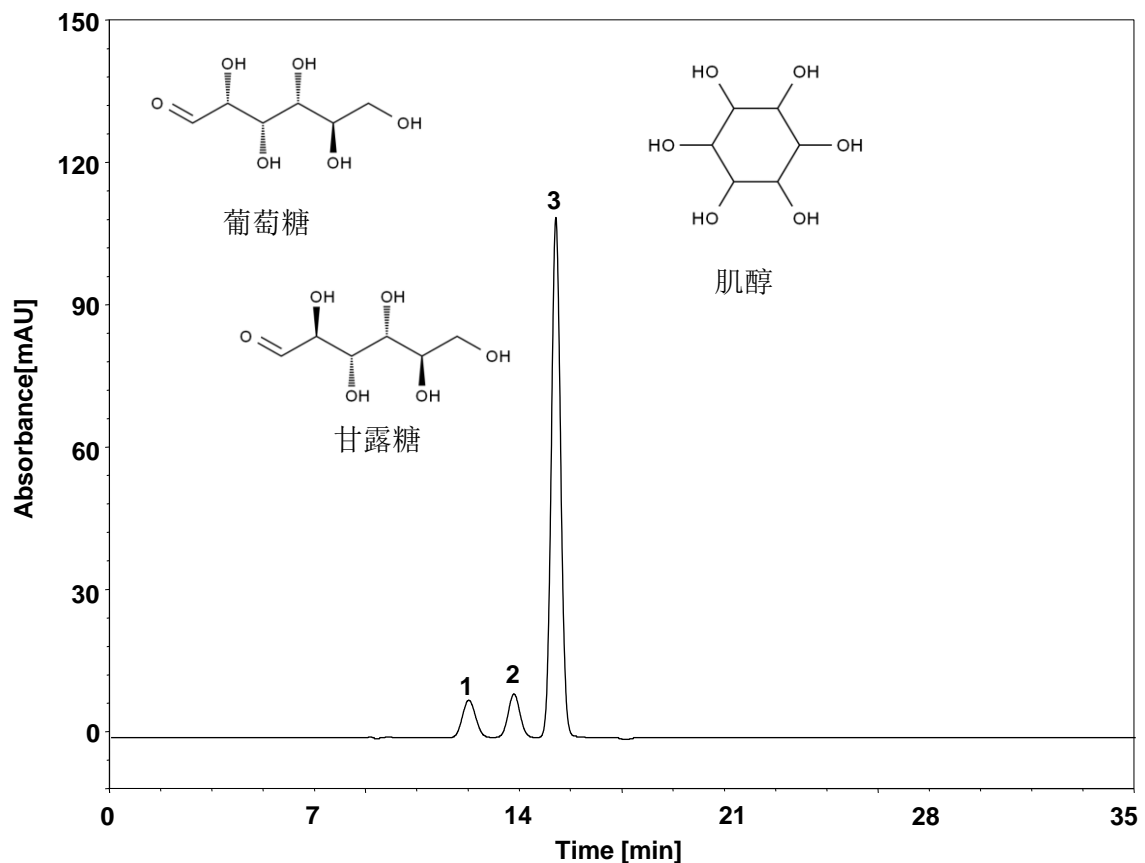


# 葡萄糖、甘露糖、肌醇



Column: ChromCore Sugar-10Ca, 6  $\mu$ m  
Dimension: 7.8  $\times$  300 mm  
Mobile Phase: 水  
Flow Rate: 0.5 mL/min  
Temperature: 80  $^{\circ}$ C  
Injection: 20  $\mu$ L  
Detection: RID 40  $^{\circ}$ C  
Instrument: 岛津LC-2030C  
Sample: 葡萄糖、甘露糖、肌醇  
Peaks: 1. 葡萄糖  
2. 甘露糖  
3. 肌醇