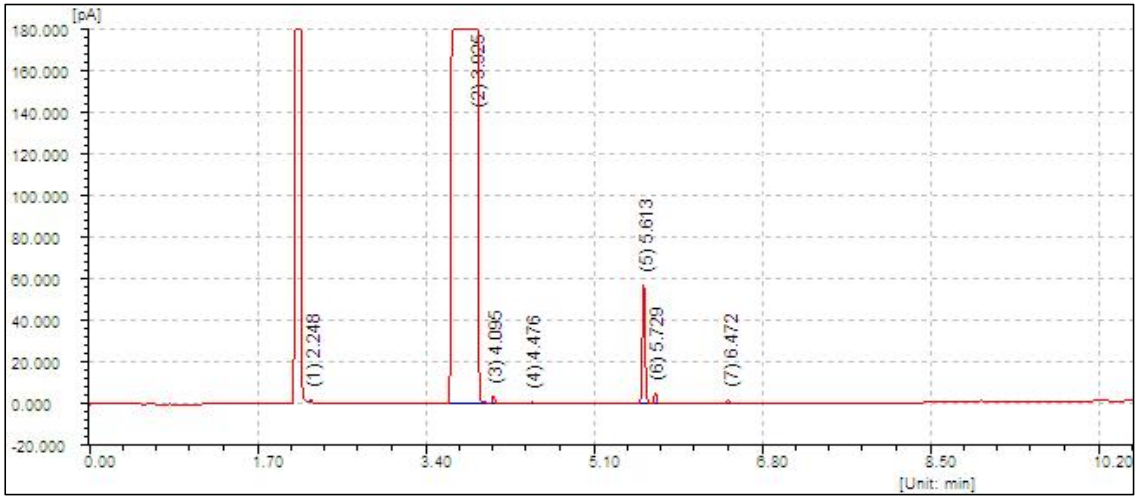


新戊二醇在NanoChrom BP-50+MS上的分离与检测



Column: NanoChrom BP-50+MS
Dimension: 30m×0.32mm×0.25μm
Carrier: Nitrogen, column flow: 1.5 mL/min
Inlet: Split, 280 °C, split ratio: 30: 1
Oven: 100 °C (hold 2 min) to 250 °C at 15 °C/min
Inject: 1.0 μL
Detector: FID 280 °C