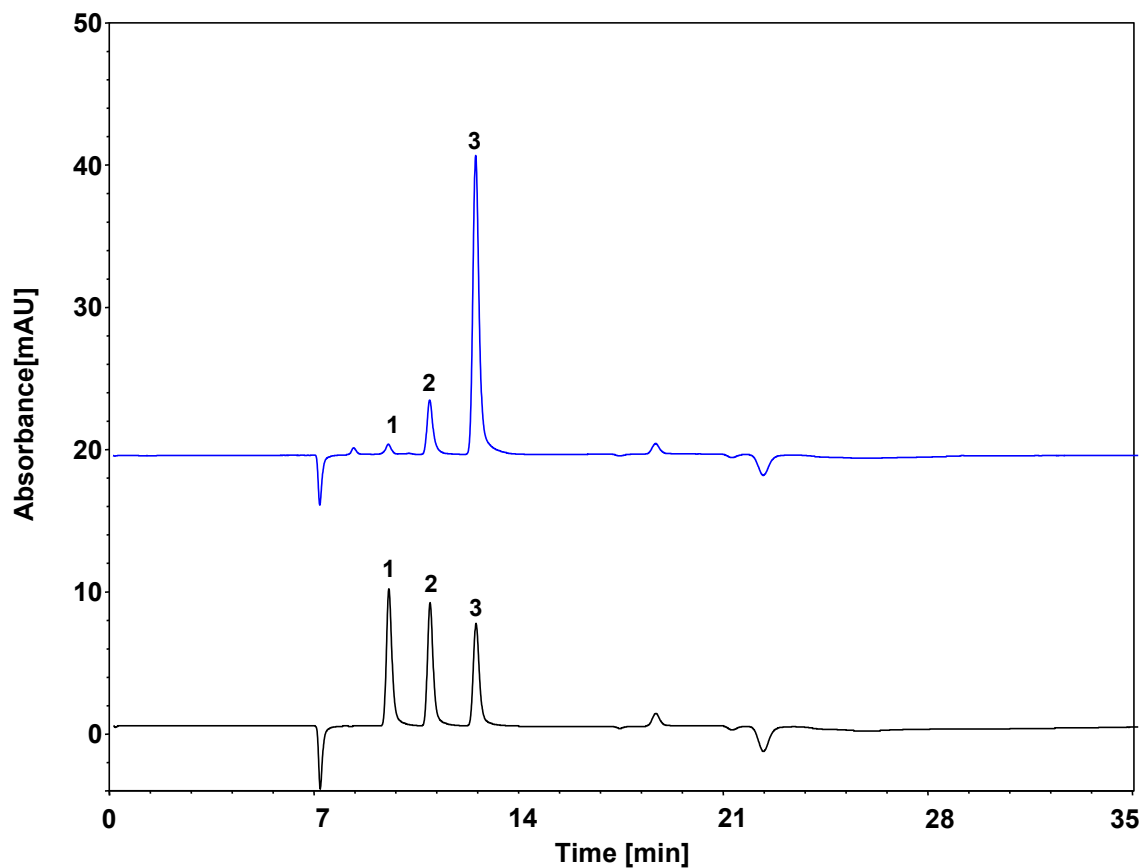
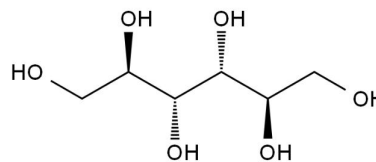


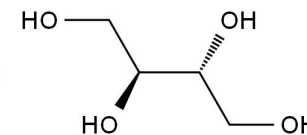
糖醇类样品-甘露糖醇、赤藓糖醇、甘油



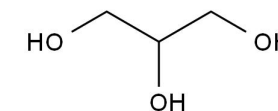
Column: ChromCore Sugar-10H, 6 μm
Dimension: 7.8 \times 300 mm
Mobile Phase: 5 mM 硫酸水溶液
Flow Rate: 0.6 mL/min
Temperature: 35 $^{\circ}\text{C}$
Injection: 5 μL
Detection: RID
Sample: 糖醇类样品
Peaks: 1. 甘露糖醇
2. 赤藓糖醇
3. 甘油



甘露糖醇



赤藓糖醇



甘油