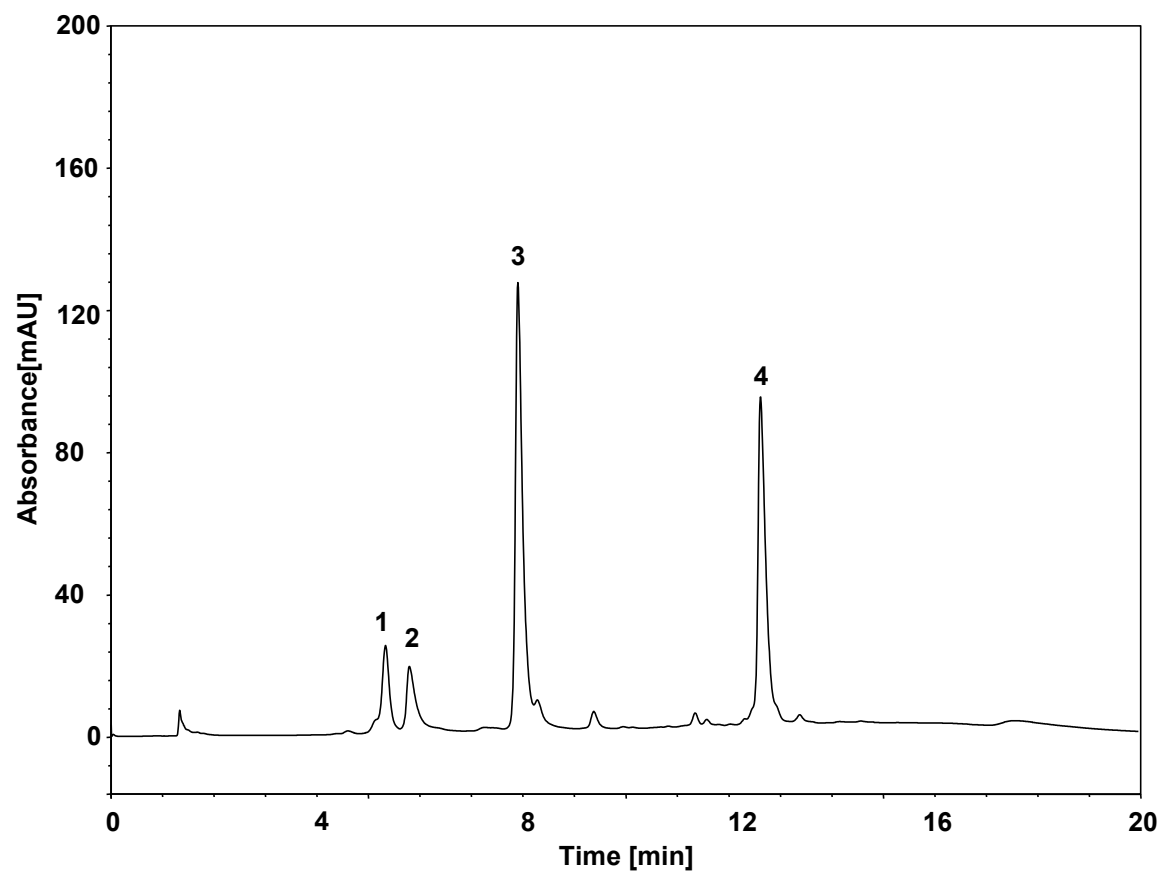


标准蛋白-疏水作用



Column: BioCore HIC-Butyl, 5 μ m
Dimension: 4.6 \times 100 mm
Mobile Phase: A) 2.0 M $(\text{NH}_4)_2\text{SO}_4$ in 100 mM phosphate buffer, pH7.0
B) 100 mM phosphate buffer, pH7.0

Gradient:

t (min)	%A	%B
-10	100	0
0	100	0
1	100	0
15	0	100
20	0	100

Flow Rate: 1.0 mL/min

Temperature: 30 $^{\circ}$ C

Injection: 10 μ L

Detection: UV 280 nm

Peaks: (~1 mg/mL each in Mobile Phase A)

1. Ribonuclease A

2. Myoglobin

3. Lysozyme

4. α -Chymotrypsinogen A