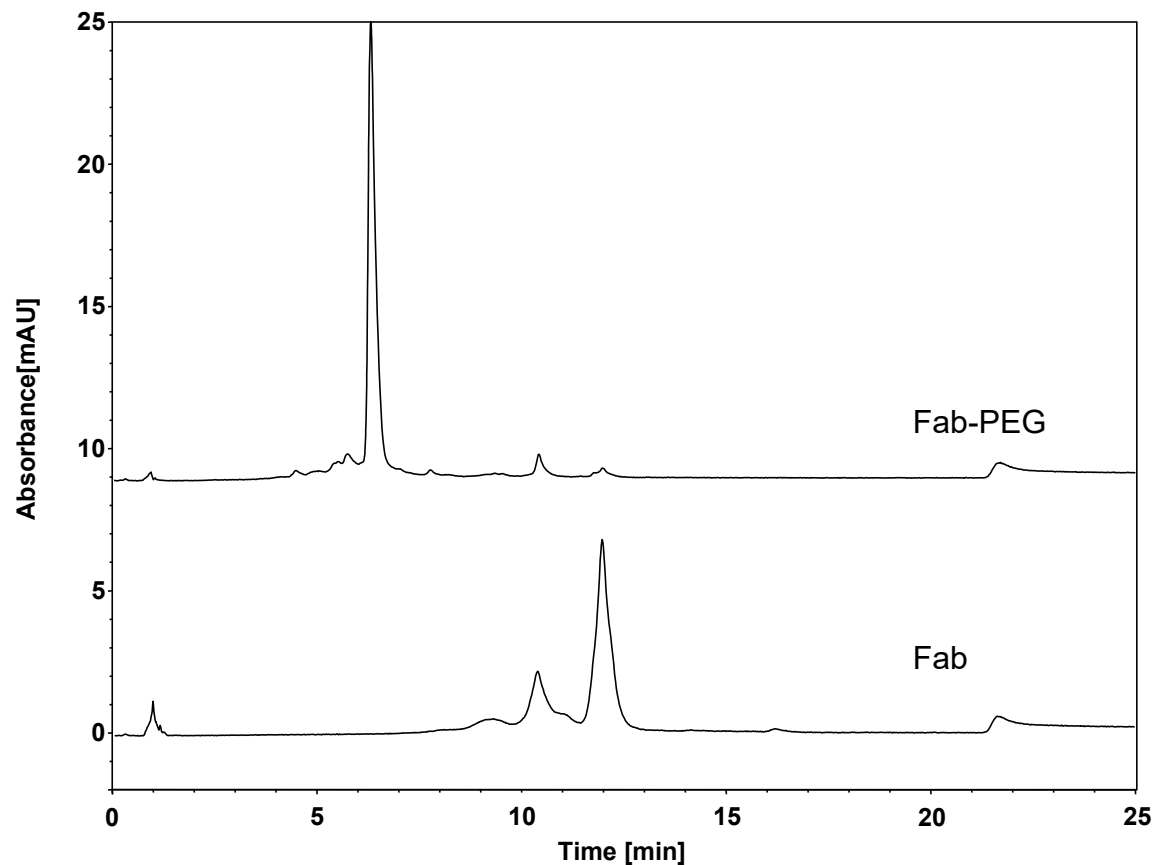


Fab and Fab-PEG(SCX)



Column: BioCore SCX, 10 μ m
Dimension: 4.6 \times 150 mm
Mobile Phase: A) 20 mM MES, pH5.5
B) 300 mM NaCl in 20 mM MES, pH5.5

Gradient:	t(min)	%A	%B
	-10	100	0
	0	100	0
	20	60	40
	20.1	0	100
	25	0	100

Flow Rate: 1.0 mL/min
Temperature: 30 $^{\circ}$ C
Injection: 2 μ L
Detection: UV 280 nm
Sample: Fab-PEG (3 mg/mL)
Fab (5 mg/mL)