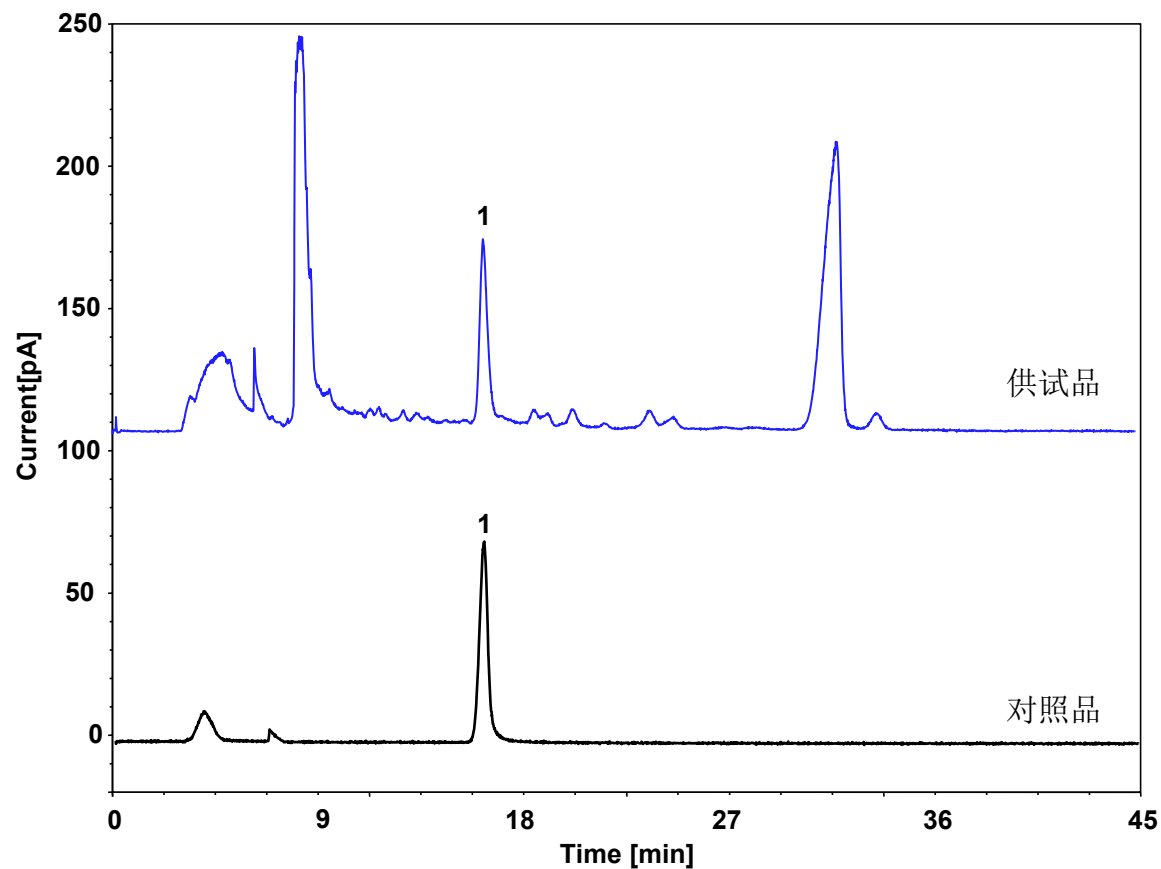


益母草-水苏碱-含量测定 (中国药典)



Column: ChromCore HILIC-Amide, 5 μ m
Dimension: 4.6 \times 250 mm
Mobile Phase: 80/20 v/v 乙腈/0.2%乙酸水
Flow Rate: 0.5 mL/min
Temperature: 20 $^{\circ}$ C
Injection: 10 μ L
Detection: CAD
Peak: 1. 水苏碱