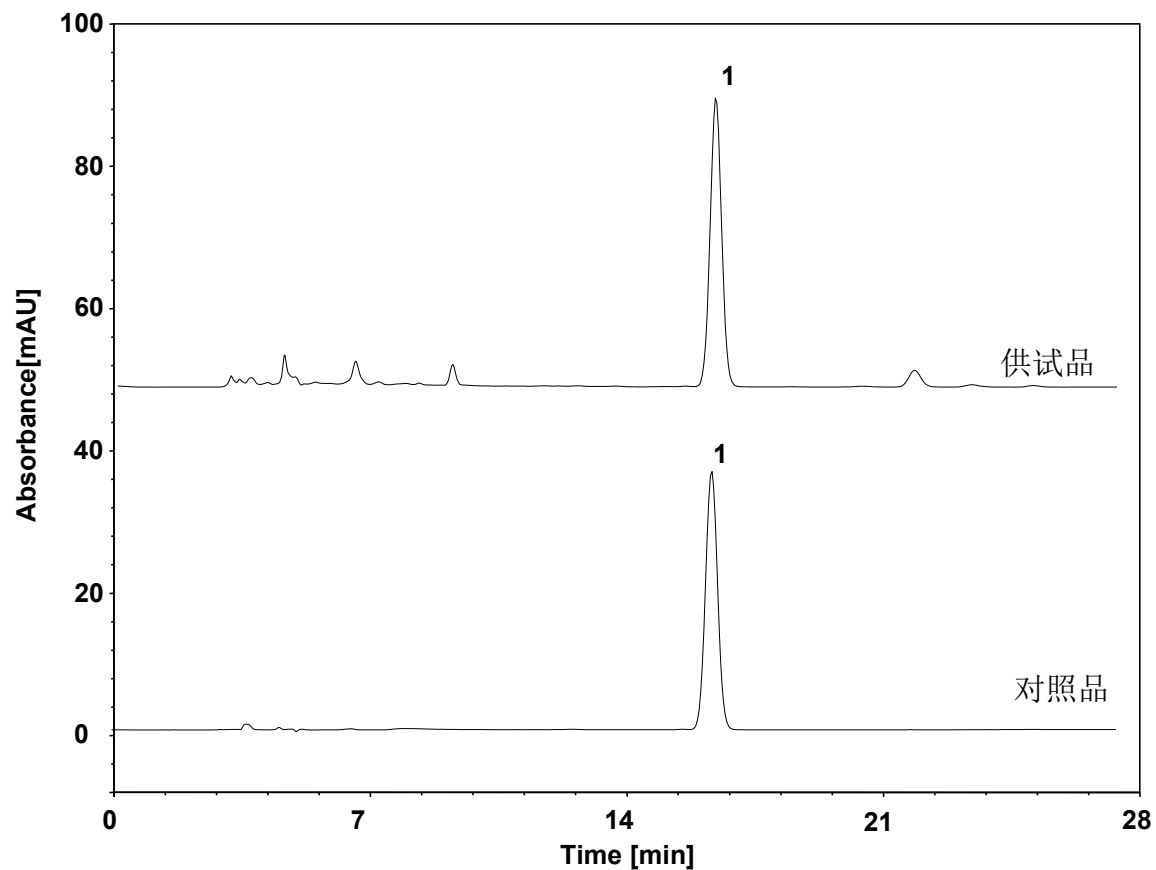


# 炒桃仁 (中国药典)



Column: ChromCore C18, 5  $\mu$ m  
Dimension: 4.6  $\times$  250 mm  
Mobile Phase: 20/80 v/v 甲醇/水  
Flow Rate: 1.0 mL/min  
Temperature: 30  $^{\circ}$ C  
Injection: 10  $\mu$ L  
Detection: UV 210 nm  
Sample: 炒桃仁  
Peak: 1. 苦杏仁苷